

# 香港統計月刊

## **Hong Kong Monthly Digest of Statistics**

二零零七年二月  
February 2007

*專題文章*  
*Feature Article*

公屋輪候冊申請人統計調查

The Survey on Waiting List Applicants for Public Rental Housing

## 公屋輪候冊申請人統計調查

# The Survey on Waiting List Applicants for Public Rental Housing

現時全港約有三成住戶居於出租公屋，超過十萬個申請人正輪候此類樓宇。公屋輪候冊申請人有其獨特的經濟社會特徵。本文根據在一九九九／二零零零年度至二零零五／零六年度進行的公屋輪候冊申請人統計調查所得的資料，對輪候冊申請人在該時期的經濟社會概況及趨勢進行分析和闡述。

Currently, there are over 100 000 applicants queuing up for public rental housing (PRH), in which about 30% of the households in Hong Kong reside. The waiting list (WL) applicants for PRH have distinct socio-economic characteristics of their own. This article analyses and describes the socio-economic profile of the WL applicants, in particular the related trends from 1999/2000 to 2005/06, based on a series of the Survey on WL Applicants for PRH conducted during this period.

如對本文有任何查詢，請致電房屋署(統計組(一)) (電話：2761 5640)。

If you have any enquiries on this article, please call Statistics Section (1), Housing Department (Tel. : 2761 5640).

# 公屋輪候冊申請人統計調查

## Survey on Waiting List Applicants for Public Rental Housing

### 1. 引言

1.1 自一九九九／二零零零年度開始，房屋署每年均進行公屋輪候冊申請人統計調查。這項統計調查旨在搜集輪候冊合資格申請人最新的社會經濟概況及其他的資料。至目前為止，該項統計調查共進行了七次。房屋署利用這一系列統計調查的數據，對輪候冊上的申請人的社會經濟特徵作分析和趨勢的研究，從而制定和檢討政策。根據一九九九／二零零零至二零零五／零六歷年的主要調查結果，本文旨在將討論和闡述關於輪候冊申請人的社會經濟特徵的趨勢。

### 2. 統計調查方法簡述

2.1 統計調查涵蓋所有公屋輪候冊申請人。樣本是由房屋署登記冊上的申請人中抽出。申請人大致分為四類，分別為高齡一人申請人（申請人為 58 歲<sup>(1)</sup>或以上）、非長者一人申請人，家有長者和一般家庭。樣本以分層抽樣方式從以上四類申請人中抽出，再以系統抽樣法從各類別的申請人當中抽選已定數目的樣本。為改善估算的精確度和需對四類不同的申請人作統計分析，本統計調查採用不按比例的分層系統抽樣法，抽選約 1 500 至 2 000 位申請人參加每次的統計調查。過去數年在登記冊上的申請人數約為 86 000 至 108 000。自這項統計調查開始以來，歷年的統計調查的回應率達 83%至 93%。

(1) 根據公營房屋政策，申請入住出租公屋的人士如滿 58 歲，便可以「高齡人士」申請。

### 1. Introduction

1.1 The annual Survey on Waiting List (WL) Applicants for Public Rental Housing (PRH) has been conducted by the Housing Department since 1999/2000. The main objective of the survey is to collect, amongst others, up-to-date information on the socio-economic profile of the eligible applicants who are queuing up for PRH. So far, a total of seven rounds of the survey were completed. On the basis of this series of survey, the Housing Department is able to analyse and track the trends of the socio-economic characteristics of WL applicants over time for facilitating policy formulation and review. This article discusses and describes the salient survey findings about the socio-economic characteristics of WL applicants, in particular the related trends as derived from the historical data series over the period from 1999/2000 to 2005/06.

### 2. Brief Description of Survey Method

2.1 The survey covered all the WL applicants for PRH. The frame used in sample selection was the General Register of WL Applicants kept by the Housing Department. There are basically four types of WL applicants, namely, elderly one-person applicants (applicants who are aged 58<sup>(1)</sup> or above), non-elderly one-person applicants, families with elderly persons and ordinary families. The WL applicants were stratified into these four categories in sample selection, and within each stratum, a pre-determined number of WL applicants were selected using systematic sampling method. To improve the precision of estimates and cater for the statistical analyses of the four individual categories of WL applicants, the survey adopted a disproportionate stratified systematic sampling method, with some 1 500 to 2 000 WL applicants selected to participate in each round of the survey. Over the past few years, the number of applicants in the General Register hovered between 86 000 and 108 000. The response rates of individual rounds of

(1) Under the current public housing policy, the WL applicants aged 58 or above can apply for PRH with a status of “elderly persons”.

the survey since its inception ranged from 83% to 93%.

### 3. 本文數據參考時段註釋

3.1 文章中的統計數字主要是從一九九九／二零零零至二零零五／零六年度內完成的公屋輪候冊申請人統計調查中獲得的數據匯集而成。為簡潔起見，文章中的統計數字將以進行統計調查時所屬的財政年度表示。較準確一點，文章中一九九九／二零零零至二零零一／零二年度期間的數據參考時段是指該年度的十月至十二月，而二零零二／零三至二零零五／零六年度期間的數據則是該年度的一月至三月。

### 4. 輪候冊申請人的社會經濟概況

#### *住戶收入*

4.1 隨着自一九九九／二零零零至二零零四／零五年度時的經濟下滑，輪候冊申請人每月家庭入息中位數亦有下降的趨勢。緊隨自二零零五／零六經濟的復甦，輪候冊申請人每月家庭入息中位數在該年度開始扭轉跌勢，由二零零四／零五年度的 6,300 元上升 3% 至 6,500 元。值得注意的，是整體家庭入息中位數這個經濟指標也有局限，因其計算輪候冊申請家庭入息隨時間的改變時，未能計及他們的家人數分布的影響。根據更深入的分析，二零零三／零四年度至二零零四／零五年度輪候冊申請人家庭入息下調的趨勢，主要是由於輪候冊申請人當中，小家庭所佔比例大增（家庭入息低與家人數少呈正相關，反之亦然）。輪候冊申請人的相關入息統計數字表列於表一。

### 3. A Note on the Reference Periods of the Statistics in this Article

3.1 The statistics presented in this article were primarily compiled based on the annual Survey on WL Applicants carried out between 1999/2000 and 2005/06. For brevity reason, the statistics in this article are expressed in terms of the financial years in which the individual rounds of the survey were conducted. In more precise terms, the statistics for 1999/2000 - 2001/02 refer to October - December of those years and those for 2002/03 - 2005/06, January - March.

### 4. Socio-economic Profile of Waiting List Applicants

#### *Household income*

4.1 The median household income of the WL applicants was on a downward trend in 1999/2000 - 2004/05 in tandem with the faltering economy during that period. Along with a revival in the economy, the median household income of the WL applicants in 2005/06 started reversing its declining trend and increased by 3% to \$6,500 from \$6,300 in 2004/05. It is worth noting that the overall median household income is an economic indicator suffering from the limitation that it cannot take into account the impact of household size distribution of WL applicants when measuring changes of median household income over time. A more in-depth analysis reveals that the decrease in the household income of WL applicants from 2003/04 to 2004/05 was primarily due to a swelling in the proportion of small-sized households in the pool of WL applicants (small-sized households are usually associated with low household income and vice versa). The relevant income statistics of WL applicants are set out in Table 1.

表一：按家庭成員人數劃分的輪候冊申請人每月家庭入息中位數

Table 1 : Median monthly household income of WL applicants by household size

家庭人數	Household size	1999/2000	2000/01	2001/02	2002/03	2003/04	2004/05	2005/06
1 人	1 person	\$5,000	\$4,800	\$4,500	\$5,000	\$5,000	\$5,000	\$5,000
2 人	2 persons	\$8,700	\$8,400	\$7,500	\$7,000	\$6,600	\$6,500	\$6,800
3 人或以上	3 persons or above	\$11,000	\$10,800	\$10,300	\$9,700	\$8,700	\$9,000	\$9,500
整體	Overall	\$9,500	\$9,100	\$8,500	\$7,000	\$6,500	\$6,300	\$6,500

### 家庭成員人數

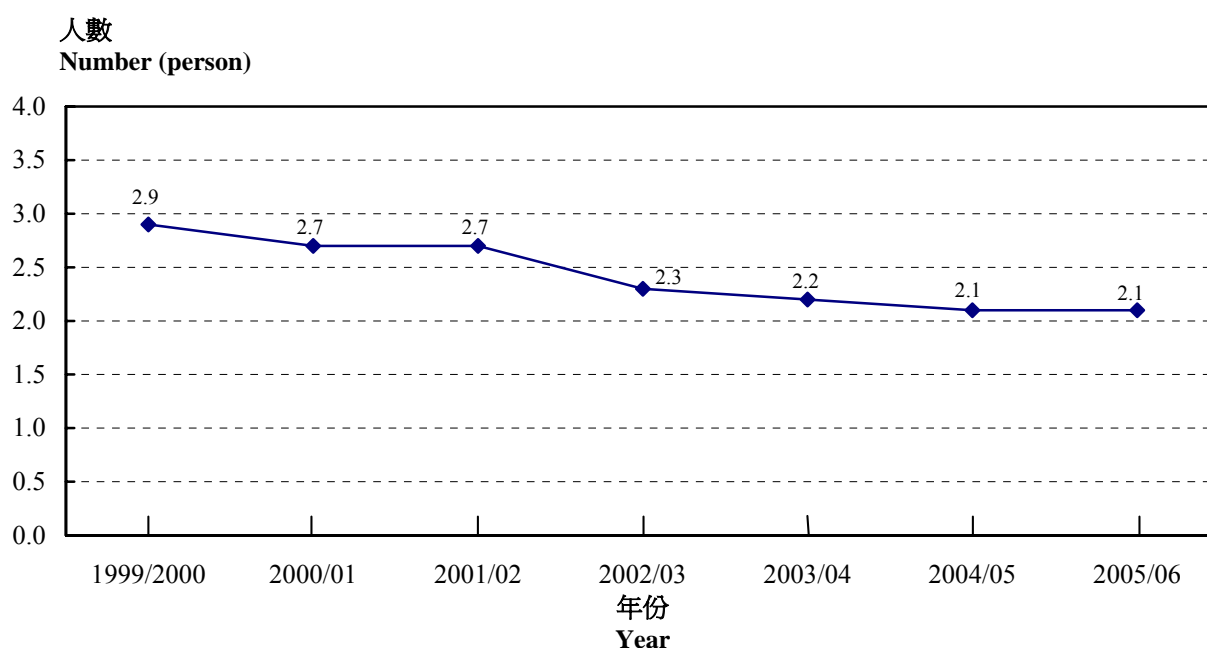
4.2 輪候冊申請人平均家庭成員人數近年明顯地持續下降，從一九九九／二零零零年度的 2.9 人下降至二零零二／零三年度的 2.3 人，及於二零零五／零六年度再跌至 2.1 人，平均每年跌幅約為 5.5%。同期的全港平均家庭成員人數亦有下降的趨勢，但幅度遠較輪候冊申請人的為低。由一九九九／二零零零至二零零五／零六年期間輪候冊申請人平均家庭成員人數的趨勢，概述於圖一。

### Household size

4.2 The past few years saw a notable declining trend in the average household size of the WL applicants, from 2.9 persons in 1999/2000 to 2.3 in 2002/03 and further to 2.1 in 2005/06, shrinking at an average rate of around 5.5% per year. The average household size of overall Hong Kong also featured a downward trend during the corresponding period, but its pace was much less drastic than that as recorded for the WL applicants. The trend of the average household size of WL applicants over the period from 1999/2000 to 2005/06 is summarized in Chart 1.

圖一：輪候冊申請人的平均家庭成員人數

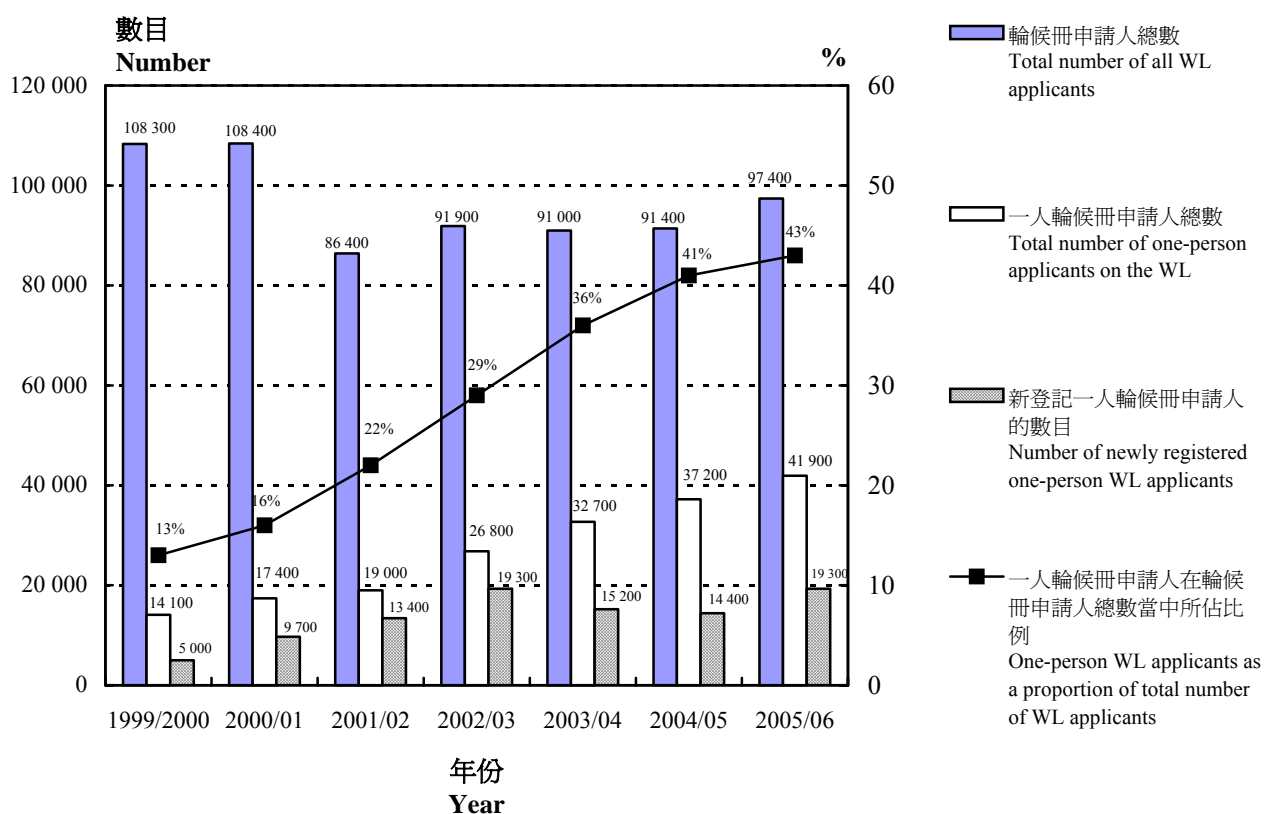
Chart 1 : Average household size of WL applicants



4.3 輪候冊申請人平均家庭人數急跌的主要成因，是一人和二人輪候冊申請人近年大增，因而令小家庭在輪候冊申請人總數當中所佔的百分比上升。一九九九／二零零零年度至二零零五／零六年度申請出租公屋的小家庭數目，概述於圖二。

4.3 One of the key contributory factors for the rapid decline in the average household size of WL applicants was a massive escalation in the number of one- and two-person WL applicants in recent years, lifting the percentage of the small-sized households in the pool of WL applicants. The statistics on the numbers of one-person households applying for PRH in 1999/2000 - 2005/06 are summarized in Chart 2.

圖二：一人輪候冊申請人的數目  
Chart 2: Number of one-person WL applicants



4.4 近年，一人輪候冊申請人的數目大幅上升，對日後出租公屋小單位的需求定會有所影響。在二零零五／零六年度，這些申請人佔輪候冊申請人總數 43%。於一九九九／二零零零年度時，只有 13%。為處理非長者一人輪候申請人對出租公屋單位需求所產生的各種問題，房委會於二零零五年九月引入「配額及計分制」（見第 4.13 段）。值得注意的是，在一人輪候冊申請人當中，約四分之一其實有家人居於中

4.4 The upsurge in the number of one-person WL applicants in recent years should have implications for the demand for small PRH flats in the future. In 2005/06, these applicants accounted for about 43% of all applicants on the WL Register. The corresponding figure in 1999/2000 was only 13%. The “quota and points system” for non-elderly one-person WL applicants was introduced in September 2005 by the Housing Authority to address the various issues arising from the demand for PRH from this category of WL applicants (see para 4.13). It is noteworthy that about a quarter of these

國內地（見第 4.17 段）。他們在家人來港定居後，很可能會立即從一人輪候冊申請人類別轉為家庭類別。

### 擬自立新戶的申請人

4.5 近年來，越來越多希望自組新家庭人士申請房屋委員會出租公屋單位。由二零零二／零三至二零零五／零六年度期間，約 40%至 60%的輪候冊申請人表示，他們獲配出租公屋單位後，會脫離現時的住戶（圖三）。由於新組成住戶傾向組織小家庭，所以輪候冊申請人當中，小家庭所佔比例甚高。

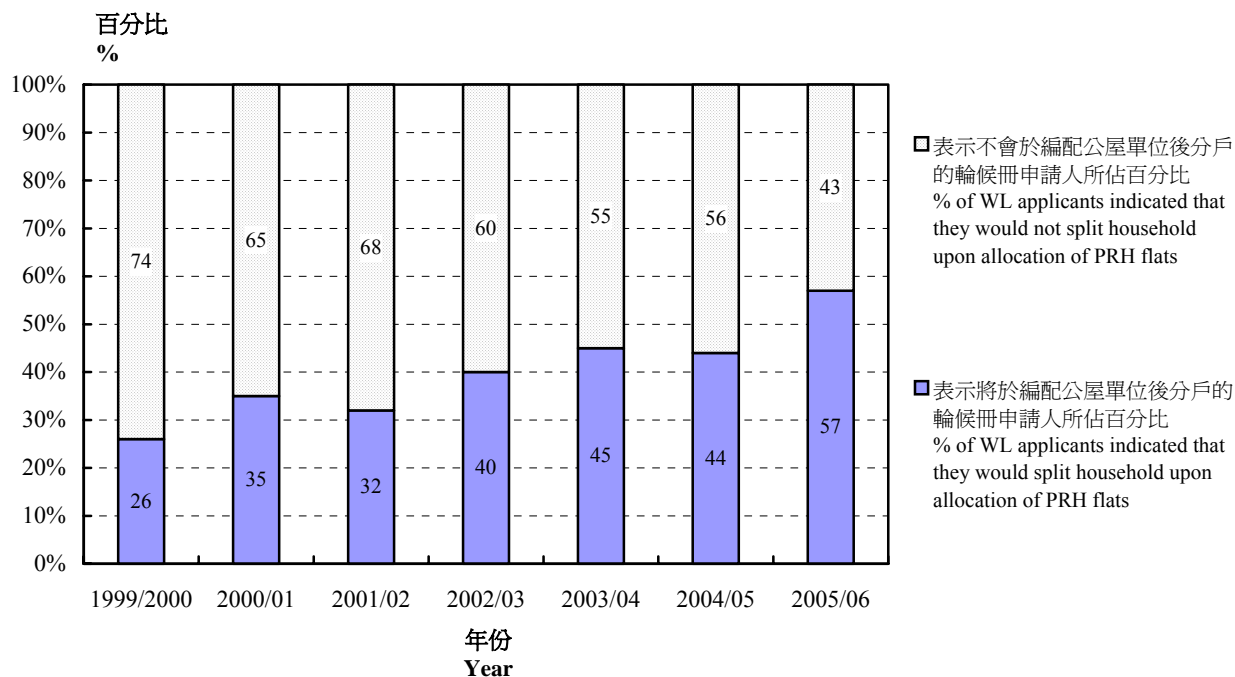
one-person WL applicants actually had close family members or relatives residing in the Mainland (see para 4.17). They would probably switch over to the WL family queue once their family members or relatives come to reside in Hong Kong.

### Applicants with intention of forming new households

4.5 In recent years, an increasing number of WL applicants have been looking to the Housing Authority for allocation of PRH flats so as to form their own households. About 40% to 60% of the WL applicants over the period from 2002/03 to 2005/06 indicated that they would break off from their existing households when they were provided with PRH flats (Chart 3). As newly formed households tend to start off with small household size, this has been manifested in the high concentration of small-sized households in the pool of WL applicants.

圖三：擬自立新戶的輪候冊申請人比例

Chart 3: Proportion of WL applicants with intention of splitting household



## 輪候冊申請人的居住環境

4.6 在二零零五／零六年度，公屋輪候冊申請人共有 97 400 名，其中約 59% 居於私人永久房屋，25% 居於出租公屋，10% 居於資助出售單位<sup>(2)</sup>，另 5% 居於臨時房屋。大部分的申請人居於私人永久房屋，居於公營房屋（即出租公屋和資助出售單位）的輪候冊申請人所佔比例，近年逐漸上升，從一九九九／二零零零年度約為 27% 上升至二零零五／零六年度的 35%。這顯示相當大的出租公屋需求是源於公營房屋的住戶。輪候冊申請人居所類別的相關統計數字，表列於表二。

## Living conditions of Waiting List applicants

4.6 Of the 97 400 applicants on the Waiting List Register for PRH in 2005/06, some 59% lived in private permanent housing; 25% in PRH; 10% in subsidised sale flats<sup>(2)</sup>; and 5% in temporary housing. While a sizeable chunk of WL applicants resided in private housing, the proportion of those applicants living in public housing (i.e. PRH and subsidised sale flats) has gradually been increasing in recent years, from about 27% in 1999/2000 to 35% in 2005/06. This signifies that a sizeable demand for PRH comes from the residents from public housing. The relevant statistics on the type of accommodation occupied by WL applicants are set out in Table 2.

表二：輪候冊申請人住所類別

Table 2: Number of WL applicants by type of accommodation

住所類別	Type of quarter	1999/2000	2000/01	2001/02	2002/03	2003/04	2004/05	2005/06
私人永久房屋	Private permanent housing	65%	68%	66%	62%	61%	60%	59%
出租公屋	PRH	22%	20%	18%	21%	19%	24%	25%
臨時房屋	Temporary housing	8%	6%	12%	10%	9%	7%	5%
資助出售單位	Subsidised sale flats	} 5%	6%	4%	6%	10%	8%	10%
其他	Others		1%	1%	1%	1%	1%	1%
合計	Overall	100%	100%	100%	100%	100%	100%	100%

4.7 輪候冊申請人居住環境近年普遍得以改善，這可從須與其他住戶同住的輪候冊申請人比例的變化，可見一斑。在二零零五／零六年度，約 69% 申請人佔用整個居住單位，31% 以佔用睡房、床位或閣樓形式與他人共用居所。一九九九／二零零零年度的相應數字分別為 59% 和 41%。輪候冊申請人居住環境的統計數

4.7 There has been a general improvement in the living conditions of WL applicants over the years as evidenced by the changes in the proportion of the WL applicants who have to share their accommodation with other households. In 2005/06, about 69% of the applicants occupied an entire flat and 31% shared their accommodation with other households in the form of bedroom, bed space or

(2) 資助出售單位包括房委會於租者置其屋計劃、居者有其屋計劃、私人機構參建居屋計劃、中等入息家庭房屋計劃、可租可買計劃與重建置業計劃下出售的單位，以及房協於住宅發售計劃及夾心階層住屋計劃下出售的單位。

(2) Subsidised Sale Flats include flats sold under Tenants Purchase Scheme, Home Ownership Scheme, Private Sector Participation Scheme, Middle Income Housing Scheme, Buy or Rent Option Scheme and Mortgage Subsidy Scheme administered by the Housing Authority; and those flats sold under the Housing Society's Flat-For-Sale Scheme and Sandwich Class Housing Scheme.



字，載列於表三。

cockloft. The corresponding figures in 1999/2000 were 59% and 41%. The statistics on the living conditions of the WL applicants are set out in Table 3.

表三：輪候冊申請人居住環境  
Table 3: Living conditions of WL applicants

居所類別	Type of accommodation	1999/2000	2000/01	2001/02	2002/03	2003/04	2004/05	2005/06
整個單位	Entire flat	59%	54%	60%	67%	70%	72%	69%
睡房	Bedroom	38%	42%	36%	31%	26%	25%	29%
其他（例如閣樓、床位）	Others (e.g. cockloft, bed space)	3%	3%	4%	2%	3%	3%	2%
合計	Overall	100%	100%	100%	100%	100%	100%	100%

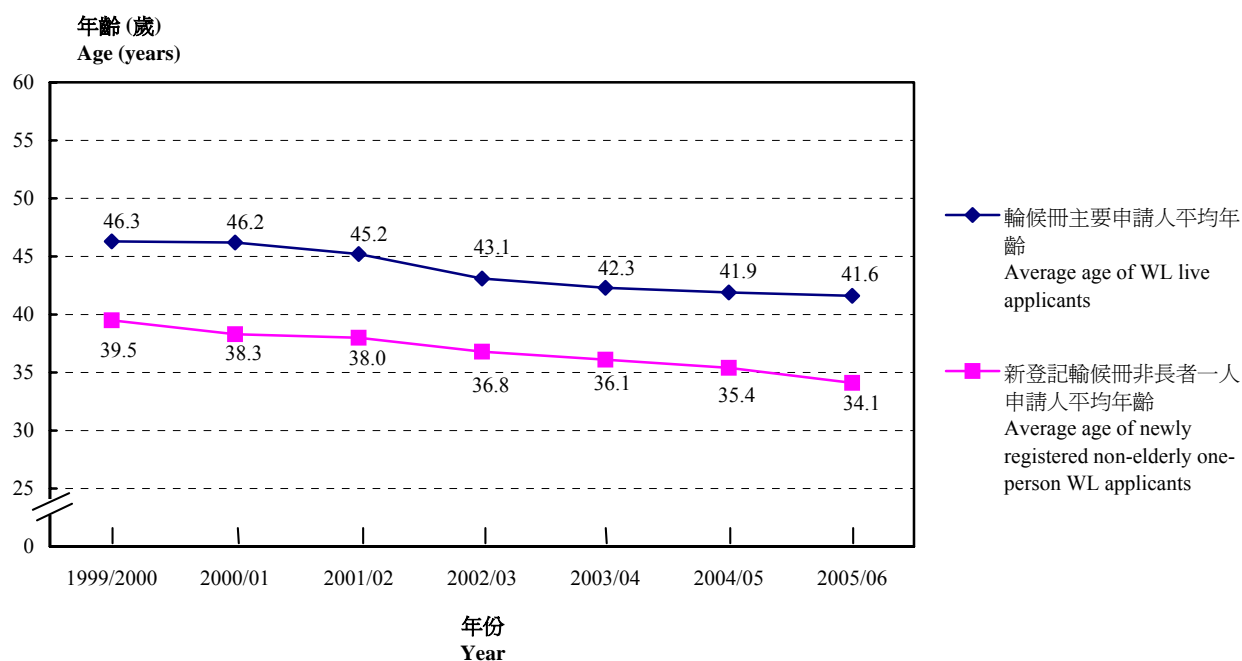
#### 申請人年齡概況

4.8 由於較年青的輪候冊申請人數目在過去數年飆升，輪候冊申請人的平均年齡持續下降，由一九九九／二零零零年度為 46.3 歲，下降至二零零二／零三年度的 43.1 歲及二零零五／零六年度的 41.6 歲。近年新登記的輪候冊申請人的平均年齡亦普遍下降，由一九九九／二零零零年度的 39.5 歲下降至二零零二／零三年度的 36.8 歲，在二零零五／零六年度更跌至 34.1 歲。年齡下降的趨勢與同期非長者一人申請人數目急升的情況相符。輪候冊申請人平均年齡的趨勢概列於圖四。

#### Age profile of applicants

4.8 With a soaring number of younger WL applicants over the past few years, the average age of all the applicants on the WL Register has been on a general declining trend, sliding from 46.3 years in 1999/2000 to 43.1 in 2002/03 and to 41.6 in 2005/06. The decrease in average age is also prevalent amongst the applicants newly registered on the WL in recent years, from 39.5 years in 1999/2000 to 36.8 in 2002/03 and further to 34.1 in 2005/06. The declining trend in age is in accord with an upsurge in the number of non-elderly one-person applicants during the corresponding period. The trend of average age of WL applicants over the period from 1999/2000 to 2005/06 is shown in Chart 4.

圖四：輪候冊申請人平均年齡  
Chart 4: Average age of WL applicants



#### 來自中國內地的新抵港人士

4.9 在二零零五／零六年度，輪候冊申請人約有 97 400 名，他們平均家庭人數為 2.1 人。換言之，當時約 20 萬人正在輪候出租公屋，他們其中約 30% 為來自中國內地的新抵港人士（即居港少於七年的居民）（見表四）。相比之下，來自中國內地的新抵港人士佔出租公屋人口的比例約為 6%。為正確理解對新抵港人士房屋統計數字，分析必須參考過去七年從中國內地來港定居人士的人數。截至二零零六年一月為止，有關數字為 357 700 人，其中約 34% 現居於出租公屋，約 16% 正在輪候出租公屋。

#### *New arrivals from the Mainland*

4.9 In 2005/06, there were some 97 400 applicants on the WL with an average number of 2.1 persons per application. In other words, some 200 000 people were queuing up for PRH at that time. Of these people waiting for PRH, about 30% were recent arrivals from the Mainland (i.e. those residents who have lived in Hong Kong for less than seven years) (Table 4). In comparison, the recent arrivals from the Mainland residing in PRH accounted for about 6% of the population in PRH in the corresponding period. To put the analysis of the recent arrivals in relation to their requirements of public housing in perspective, reference has to be made to the housing statistics of those people who came from the Mainland to live in Hong Kong over the past seven years, which totalled about 357 700 as at January 2006. Of these, it is estimated that some 34% had resided in PRH and about 16% were waiting for PRH.

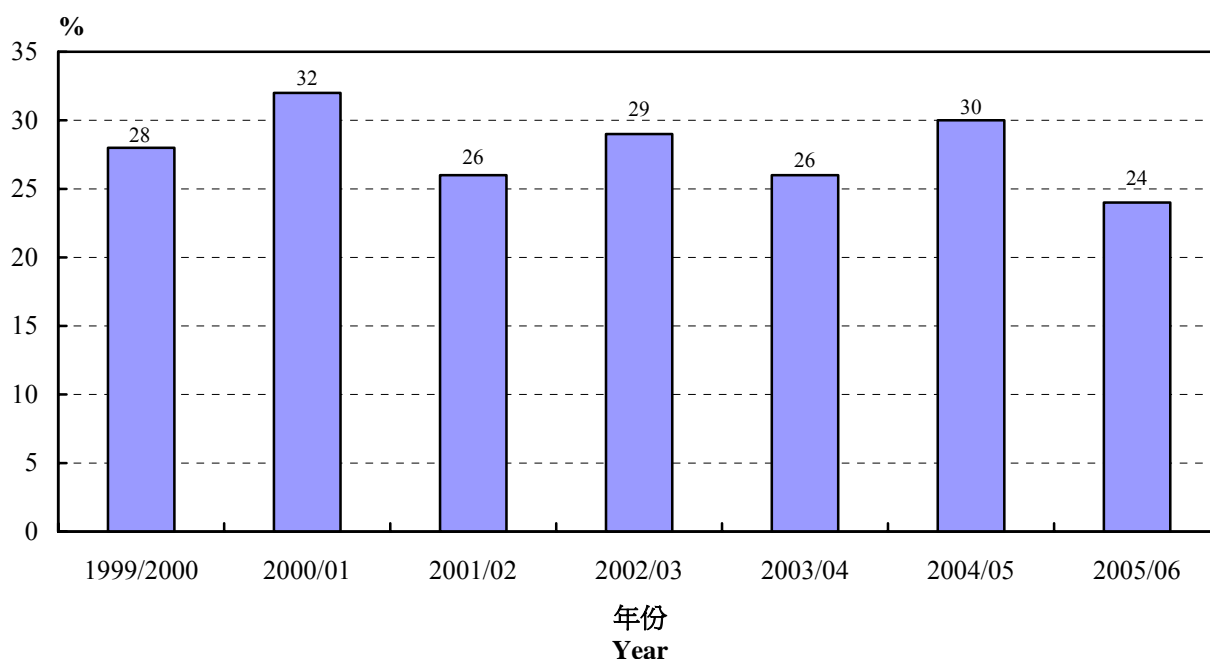
表四：來自中國內地的新抵港人士佔輪候冊人士（即申請表上所列人士）的百分比  
**Table 4 : Proportion of persons on WL (i.e. people who have been included in the application forms) who are new arrivals from the Mainland**

		1999/2000	2000/01	2001/02	2002/03	2003/04	2004/05	2005/06
來自中國內地的新抵港人士佔輪候冊人士的百分比	% of persons on WL who are new arrivals from the Mainland	12%	35%	32%	28%	25%	24%	29%

4.10 此外，在近數年約 24%至 32%的輪候冊申請人表示在內地有近親或家人（例如配偶或子女）而他們打算來港定居（圖五）。值得注意的是，在這類申請人當中，很多（46%）為一人輪候冊申請人。

4.10 In addition, over the past few years, some 24% to 32% of the WL applicants indicated that they had close relatives or family members (e.g. spouses or children) in the Mainland who had intention of moving to reside in Hong Kong (Chart 5). It is of interest to note that a significant proportion (46%) of these applicants were one-person WL applicants.

圖五：有家人在中國內地而打算來港定居的輪候冊申請人佔輪候冊上所有申請人的比例  
**Chart 5 : WL applicants with family members/relatives in the Mainland who had intention of moving to reside in Hong Kong**



4.11 申請人在中國內地居住而打算來港定居的家人/親屬，他們大部分均是申請人的配偶/子女。有關的統計數字詳列於表五。

4.11 Most of the WL applicants' family members/relatives living in the Mainland with intention of residing in Hong Kong were their spouses or/and children. The relevant statistics are set out below. (Table 5)

表五：主要申請人與其打算來港定居的家人的關係

Table 5: Relationship of main applicants with the family members/relatives who had intention of moving to live in Hong Kong

關係	Relationship	1999/2000	2000/01	2001/02	2002/03	2003/04	2004/05	2005/06
父母	Parents	5%	4%	5%	6%	5%	3%	3%
配偶	Spouse	41%	38%	37%	44%	47%	46%	45%
子女	Children	48%	46%	46%	42%	46%	45%	47%
其他	Others	6%	12%	12%	8%	3%	6%	5%
合計	Overall	100%	100%	100%	100%	100%	100%	100%

### 綜合社會保障援助受助人

4.12 二零零五/零六年度，在所有輪候冊申請人當中，約 16% 為綜合社會保障援助（下稱「綜援」）受助人。相比之下，同期約 20% 出租公屋租戶為綜援受助人。在輪候冊申請人中，長者的綜援受助人比例較年輕申請人的為多。約 49% 長者申請人為綜援受助人，相比其他申請人，只有 14%。

### Comprehensive Social Security Assistance

4.12 Of all the WL applicants in 2005/06, some 16% were on the Comprehensive Social Security Assistance (CSSA). In comparison, about 20% of the tenants in PRH received CSSA payments in the corresponding period. There were more CSSA recipients in terms of proportion amongst the elderly WL applicants than their younger counterparts. Some 49% of the elderly WL applicants were on CSSA, compared with 14% for other applicants.

### 非長者一人申請人的社會經濟特徵

4.13 非長者一人出租公屋申請人的問題近年備受關注。房委會於二零零五年九月對這類申請人士引入的「配額及計分制」，這制度是以考慮申請人的輪候時間、年齡以及是否出租公屋居民來重新編排獲配單位的優先次序。非長者一人申請人獲配單位的優先次序是按申請人所得的分數而定。分數越高，便越早獲編配租住出租公屋單位。每年的非長者一人申請人的配額大約為 1 000 至 2 000 個出租公屋單位。就此，以下的章節將闡述有關這類申請人的統

### Socio-economic Characteristics of Non-elderly One-person Applicants

4.13 The issue of non-elderly one-person WL applicants has been under the spotlight in recent years. The "quota and points system" for these applicants was introduced by the Housing Authority in September 2005, which seeks to reprioritize the allocation of PRH flats to the applicants by taking into consideration their waiting time, age and whether or not they are PRH tenants. The relative priority of the non-elderly one-person applicants on the WL will be determined according to the points received. The higher number of points accumulated, the earlier the applicant will be offered a PRH flat. The annual allocation quota for

計數字，以便對這類申請人的社會經濟概況有更深入的了解。

### 一人申請人的數目

4.14 過去數年，新登記輪候冊非長者一人申請人的數目，由一九九九／二零零零年度的 2 900 人（佔所有新登記申請人的 12%），激增至二零零五／零六年度的 16 000 人（39%）。一九九九／二零零零年度至二零零五／零六年度期間，申請人的數目躍升約 450%。一九九九／二零零零年度至二零零五／零六年度非長者一人申請人趨勢概要載於圖六。

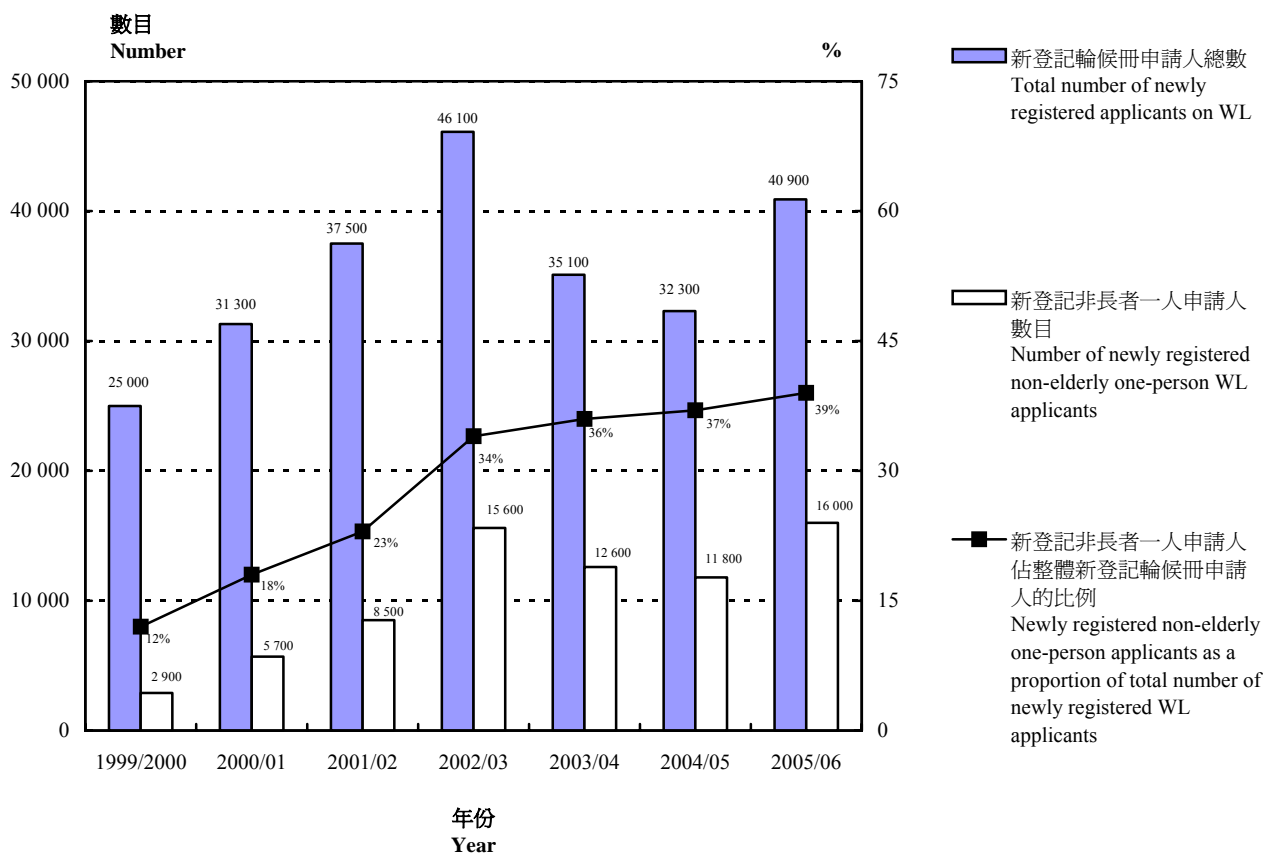
non-elderly one-person applicants is around 1 000 to 2 000 PRH flats. In this regard, some detailed statistics on this type of applicants are presented in the ensuing paragraphs to facilitate a better understanding on the socio-economic profile of these applicants.

### Number of One-person Applicants

4.14 Over the past few years, the number of non-elderly one-person applicants newly registered on the WL escalated from 2 900 (12% of all newly registered applicants) in 1999/2000 to 16 000 (39%) in 2005/06. In percentage terms, the number of these applicants rose markedly by about 450% between 1999/2000 and 2005/06. The trend of non-elderly one-person applicants from 1999/2000 to 2005/06 is summarized in Chart 6.

圖六：新登記輪候冊非長者一人申請人數目

Chart 6: Number of newly registered non-elderly one-person WL applicants



## 年齡概況

4.15 新登記輪候冊非長者一人申請人的平均年齡漸趨下降，由一九九九／二零零零年度的 39.5 歲下降至二零零五／零六年度的 34.1 歲，反映這數年來，越來越多較年輕的一人申請人申請出租公屋。18 歲至 30 歲年齡組別的一人申請人數目尤其顯注，在一九九九／二零零零年度至二零零五／零六年度期間飆升 12 倍，由 570 人增至 7 360 人，讀者可參照第 4.8 段圖四的新登記非長者一人申請人的平均年齡。

## 住所類別

4.16 超過 50% 的非長者一人申請人居於私人永久房屋。值得注意的是約有四分之一的申請人為與家人同住的公屋居民。此外，居於資助出售單位的非長者一人申請人的比例更是不斷上升，由一九九九／二零零零年度的 3% 升至二零零五／零六年度的 12%（表六）。這顯示近年不斷上升的非長者一人申請人中，有更多現居於公營房屋（出租公屋及資助出售單位）的居民申請入住出租公屋。

## Age profile

4.15 The average age of the newly registered non-elderly one-person WL applicants was declining gradually from 39.5 years in 1999/2000 to 34.1 in 2005/06. This reflects that more and more one-person applicants of younger age have applied for PRH over the years. In particular, the number of newly registered one-person applicants in the age group 18 - 30 skyrocketed by 12-fold from 570 to 7 360 between 1999/2000 and 2005/06. Readers can refer to Chart 4 under para. 4.8 on the average age of the newly registered non-elderly one-person applicants over the years.

## Type of accommodation

4.16 Over 50% of the non-elderly one-person applicants lived in private permanent housing. It is noteworthy that around one quarter of the applicants were residents living in PRH together with their existing families. In addition, the proportion of non-elderly one-person applicants residing in subsidised sale flats as a percentage of the total number of one-person applicants was on the rise, from 3% in 1999/2000 to 12% in 2005/06 (Table 6). This indicates that the increase in non-elderly one-person applicants in recent years can in part be traced to more residents from public housing (PRH and subsidised sale flats) applying for PRH.

表六：非長者一人申請人住所類別

Table 6 : Non-elderly one-person applicants by type of accommodation

住所類別	Type of quarter	1999/2000	2000/01	2001/02	2002/03	2003/04	2004/05	2005/06
私人永久房屋	Private permanent housing	54%	58%	50%	51%	50%	58%	55%
出租公屋	PRH	24%	25%	24%	29%	24%	26%	27%
臨時房屋	Temporary housing	11%	10%	17%	13%	11%	8%	4%
資助出售單位	Subsidised sale flats	3%	5%	7%	6%	11%	7%	12%
其他	Others	7%	3%	2%	2%	4%	1%	2%
合計	Overall	100%	100%	100%	100%	100%	100%	100%

## 教育程度

4.17 於二零零五／零六年度，約 10%非長者一人申請人有專上教育或以上程度（表七）。35 歲或以下的申請人有這樣程度的百分比，則高達 18%左右。大部分的非長者一人申請人的學歷為中學程度。非長者一人申請人的教育程度和年齡有着莫大的關係——越是年輕的申請人，教育程度便越高。

## Educational attainments

4.17 In 2005/06, around 10% of the non-elderly one-person applicants had academic qualifications up to post-secondary education or above (Table 7). For those who were aged 35 or below, the corresponding percentage went up to about 18%. The bulk of the non-elderly one-person applicants had secondary school education. There is a strong association between academic qualifications and age of non-elderly one-person applicants — the younger the applicants, the higher their educational qualifications.

表七：二零零五／零六年度非長者一人申請人教育程度

Table 7 : Educational attainment of non-elderly one-person applicants in 2005/06

教育程度	Educational attainment	18-35 歲 Aged 18-35	36-45 歲 Aged 36-45	46-57 歲 Aged 46-57	58 歲 及以上 Aged 58 and above	整體 Overall
小學或以下	Primary school or below	5%	13%	41%	56%	16%
中學	Secondary school	77%	83%	57%	44%	74%
專上學歷	Post secondary academic qualifications	10%	2%	-	-	5%
大專或以上	Tertiary or above	8%	2%	1%	-	5%
總計	Total	100%	100%	100%	100%	100%

## 婚姻狀況

4.18 約 14%非長者一人申請人為離婚人士／鰥夫／寡婦。在評定他們申請出租公屋的資格時，他們支付予前度配偶的贍養費可從入息中扣除。此外，約 30%非長者一人申請人為已婚。他們獨自申請出租公屋，沒有把配偶或／和子女填報申請表內，因為他們的配偶或／和子女絕大多數仍居於中國內地。（表八）

## Marital status

4.18 Some 14% of the non-elderly one-person applicants were divorcees / widowers / widows. They can have their alimony for their ex-spouses discounted from their income for the purpose of assessing their eligibility for PRH. In addition, around 30% of the non-elderly one-person applicants were married. They had applied for PRH on their own without including their spouses or/and children in the application forms for the reason that an overwhelming majority of their spouses or/and children were living in the Mainland. (Table 8)

表八：二零零五／零六年度非長者一人申請人婚姻狀況

Table 8 : Marital status of non-elderly one-person applicants in 2005/06

婚姻狀況	Marital status	18-35 歲 Aged 18-35	36-45 歲 Aged 36-45	46-57 歲 Aged 46-57	58 歲 及以上 Aged 58 and above	整體 Overall
已婚	Married	11%	55%	32%	44%	29%
從未結婚	Never married	85%	31%	33%	22%	57%
離婚／分居／ 鰥寡	Divorced/Separated/ Widowed	4%	14%	35%	33%	14%
總計	Total	100%	100%	100%	100%	100%

4.19 這些申請人的配偶或／和子女來港後，他們即會把在輪候冊上所屬類別轉為家庭類別。從統計數字反映，轉為家庭類別的非長者一人申請人數目，過去數年持續增加。（表九）

4.19 These applicants may switch to the family WL queue once their spouses or/and children have moved to reside in Hong Kong. This has been reflected in the statistics on the number of non-elderly one-person applicants shifting to family queue, which were on the rise over the past few years. (Table 9)

表九：轉為家庭類別的非長者一人申請人

Table 9 : Non-elderly one-person applicants switching to the queue of family applications

		2002/03	2003/04	2004/05	2005/06
轉為家庭類別的 輪候冊申請人數 目	Number of WL applicants shifting to family queue	1 600	1 600	2 000	3 700



## 二零零七年一月至二月刊載的專題文章目錄

### List of Feature Articles Published during January to February 2007

月份	文章題目	Month	Title of Article
1	(i) 對外直接投資統計	1	(i) External direct investment statistics
	(ii) 一九九七至二零零六年中層經理級與專業僱員薪金統計數字		(ii) Salary statistics of middle-level managerial and professional employees 1997-2006
2	(i) 從事製造業相關活動的貿易公司	2	(i) Trading firms with manufacturing-related activities
	(ii) 公屋輪候冊申請人統計調查		(ii) The survey on waiting list applicants for public rental housing
	(iii) 一九九八至二零零五年工商業的資訊科技開支		(iii) Expenditure on information technology in the business sector, 1998-2005



**二零零七年三月至六月**  
**政府統計處定期性統計數據發布日期一覽表**  
**Schedule for Issuing Regular Releases of Statistical Data by**  
**the Census and Statistics Department, March – June 2007**

每年九月底，本處會向傳媒公布翌年定期性統計數據新聞發布的詳細時間表。本附錄載列未來四個月的發布日期。數據於發布日期下午四時十五分向傳媒公布。有關的新聞公布於稍後時間載列於政府統計處的網站上 (www.censtatd.gov.hk)。發布日期下午四時十五分後致電本處，亦可查詢有關統計數據。

The date schedule for issuing regular press releases of statistical data in the ensuing year is issued to the mass media in end September of each year. This Annex gives the schedule for the coming four months. Data are issued to the media at 4:15 p.m. on the date of release. The press releases are posted shortly afterwards on the Department's website (www.censtatd.gov.hk). Telephone enquiries may also be made to the Department after 4:15 p.m. on the release date.

統計數據 Statistical Data	發布日期 (日/月/年) Release Date (DD/MM/YYYY)
--------------------------	---

**勞工統計**

**Labour Statistics**

1. 失業及就業不足統計數字	Unemployment and Underemployment Statistics	
二零零六年十二月至二零零七年二月	December 2006 - February 2007	20.03.2007
二零零七年一月至三月	January - March 2007	19.04.2007
二零零七年二月至四月	February - April 2007	17.05.2007
二零零七年三月至五月	March - May 2007	21.06.2007
<i>查詢電話 Enquiry Telephone Number</i> 2887 5506		
2. 就業及空缺統計	Employment and Vacancies Statistics	
二零零六年十二月	December 2006	21.03.2007
二零零七年三月	March 2007	22.06.2007
<i>查詢電話 Enquiry Telephone Number</i> 2582 4751		
3. 薪金總額及工資統計	Payroll and Wage Statistics	
二零零六年第四季	4th Quarter 2006	27.03.2007
二零零七年第一季	1st Quarter 2007	26.06.2007
<i>查詢電話 Enquiry Telephone Number</i> 2887 5584		

**對外貿易統計**

**External Trade Statistics**

1. 對外商品貿易統計	External Merchandise Trade Statistics	
二零零七年二月	February 2007	26.03.2007
二零零七年三月	March 2007	26.04.2007
二零零七年四月	April 2007	28.05.2007
二零零七年五月	May 2007	26.06.2007
<i>查詢電話 Enquiry Telephone Number</i> 2582 4914		
2. 對外商品貿易貨量及價格統計	Volume and Price Statistics of External Merchandise Trade	
二零零七年一月	January 2007	19.03.2007
二零零七年二月	February 2007	19.04.2007
二零零七年三月	March 2007	14.05.2007
二零零七年四月	April 2007	15.06.2007
<i>查詢電話 Enquiry Telephone Number</i> 2582 4914		

## 對外貿易統計 (續)

## External Trade Statistics (Cont'd.)

3.	按產品所屬工業劃分的本港製造業 產品出口統計 二零零七年第一季 查詢電話 Enquiry Telephone Number	Domestic Export Statistics Classified by Industrial Origin 1st Quarter 2007 2805 6641	08.05.2007
4.	船隻、港口貨物及貨櫃統計 二零零六年第四季 二零零七年第一季 查詢電話 Enquiry Telephone Number	Statistics on Vessels, Port Cargo and Containers 4th Quarter 2006 1st Quarter 2007 2582 4889	08.03.2007 07.06.2007
5.	涉及外發中國內地加工貿易統計 二零零六年第四季 二零零七年第一季 查詢電話 Enquiry Telephone Number	Statistics on Trade Involving Outward Processing in the Mainland of China 4th Quarter 2006 1st Quarter 2007 2582 5255	20.03.2007 21.06.2007

## 物價統計

## Price Statistics

1.	消費物價指數 二零零七年二月 二零零七年三月 二零零七年四月 二零零七年五月 查詢電話 Enquiry Telephone Number	Consumer Price Index February 2007 March 2007 April 2007 May 2007 2805 6401	22.03.2007 23.04.2007 21.05.2007 22.06.2007
----	---	--	--

## 國民收入及國際收支平衡統計

## National Income and Balance of Payments Statistics

1.	本地生產總值 二零零七年第一季 <sup>(1)</sup> 查詢電話 Enquiry Telephone Number	Gross Domestic Product 1st Quarter 2007 <sup>(1)</sup> 2582 4787	18.05.2007
----	--	--	------------

註： (1) 財政司司長辦公室轄下的經濟分析及方便營商處的經濟分析部發布有關二零零七年第一季經濟報告及二零零七年全年本地生產總值暨物價預測第一次修訂的新聞稿時，二零零七年第一季本地生產總值亦於該新聞稿中發布。政府統計處不會在當日就二零零七年第一季的本地生產總值另發新聞稿。

Note: (1) The Economic Analysis Division of the Economic Analysis and Business Facilitation Unit under the Financial Secretary's Office will issue a press release on the First Quarter Economic Report 2007 and first update of GDP and prices forecasts for 2007 as a whole. The GDP for the first quarter of 2007 will also be released there. No separate press release on the GDP for the first quarter of 2007 will be issued by the Census and Statistics Department on that day.

2.	以固定價格計算按經濟活動劃分的 按季本地生產總值 二零零六年第四季 二零零七年第一季 查詢電話 Enquiry Telephone Number	Quarterly Constant Price Gross Domestic Product by Economic Activity 4th Quarter 2006 1st Quarter 2007 2116 5188	23.03.2007 22.06.2007
3.	本地居民生產總值及對外要素收益 流動數字 二零零六年第四季 二零零七年第一季 查詢電話 Enquiry Telephone Number	Gross National Product and External Factor Income Flows 4th Quarter 2006 1st Quarter 2007 2116 5101	15.03.2007 14.06.2007

國民收入及國際收支平衡統計 (續)

**National Income and Balance of Payments Statistics (Cont'd.)**

4.	國際收支平衡統計	Balance of Payments Statistics	
	二零零六年第四季	4th Quarter 2006	23.03.2007
	二零零七年第一季	1st Quarter 2007	22.06.2007
	查詢電話 Enquiry Telephone Number 2116 8660		
5.	國際投資頭寸統計	International Investment Position Statistics	
	二零零六年	2006	11.06.2007
	查詢電話 Enquiry Telephone Number 2116 8660		

其他各類統計

**Various Other Types of Statistics**

1.	零售業銷貨額統計	Retail Sales Statistics	
	二零零七年一月	January 2007	01.03.2007
	二零零七年二月	February 2007	02.04.2007
	二零零七年三月	March 2007	03.05.2007
	二零零七年四月	April 2007	31.05.2007
	查詢電話 Enquiry Telephone Number 2802 1367		
2.	工業生產指數和製造業生產者 價格指數	Quarterly Index of Industrial Production and Quarterly Producer Price Indices for Manufacturing Industries	
	二零零六年第四季	4th Quarter 2006	15.03.2007
	二零零七年第一季	1st Quarter 2007	14.06.2007
	查詢電話 Enquiry Telephone Number 2805 6641		
3.	建造工程完成量統計	Construction Output Statistics	
	二零零六年第四季	4th Quarter 2006	13.03.2007
	二零零七年第一季	1st Quarter 2007	12.06.2007
	查詢電話 Enquiry Telephone Number 2805 6424		
4.	食肆的收入及購貨額統計	Restaurant Receipts and Purchases Statistics	
	二零零七年第一季	1st Quarter 2007	10.05.2007
	查詢電話 Enquiry Telephone Number 2802 1367		
5.	服務行業按季業務收益指數	Quarterly Business Receipts Indices for Service Industries	
	二零零六年第四季	4th Quarter 2006	12.03.2007
	二零零七年第一季	1st Quarter 2007	11.06.2007
	查詢電話 Enquiry Telephone Number 2802 1269		
6.	按季業務展望統計調查結果	Results of the Quarterly Business Tendency Survey	
	二零零七年第二季	2nd Quarter 2007	26.04.2007
	查詢電話 Enquiry Telephone Number 2805 6112		

政府統計處刊物一覽 (截至二零零七年二月一日)

List of Publications of the Census and Statistics Department (as at 1.2.2007)

名稱	Title	最新期號##	印刷版售價(港元)	
			不包括郵費	連本地郵費
			Not Including Postage	Including Local Postage
<b>綜合性統計刊物</b>				
<b>General Statistical Digests</b>				
香港經濟趨勢 (半月刊)	Hong Kong Economic Trends (half-monthly)	31/1/2007	18.0	21.0
香港統計月刊 §	Hong Kong Monthly Digest of Statistics §	1/2007	100.0	116.5
香港統計年刊 §	Hong Kong Annual Digest of Statistics §	2006	122.0	150.0
香港社會及經濟趨勢 (雙年刊) §	Hong Kong Social and Economic Trends (biennial) §	2005	110.0	126.4
香港的發展(1967 - 2002) - 統計圖表集 (特刊) §	A Graphic Guide on Hong Kong's Development (1967 - 2002) (ad hoc) §	-	38.0	54.4
香港統計數字一覽 (年刊) ++	Hong Kong in Figures (annual) ++	2006	<-----免費 Free ----->	<-----免費 Free ----->
<b>對外貿易</b>				
<b>External Trade</b>				
<b>商品貿易統計</b>				
<b>Merchandise Trade Statistics</b>				
香港商品貿易統計 :				
進口 (月刊)	Imports (monthly)	10/2006	278.0	306.0
港產品出口及轉口 (月刊)	Domestic Exports and Re-exports (monthly)	10/2006	278.0	306.0
周年附刊, 按國家及貨品劃分 :				
- 進口	- Imports	2005	235.0	263.0
- 港產品出口及轉口	- Domestic Exports and Re-exports	2005	235.0	282.0
香港對外商品貿易 (月刊)	Hong Kong External Merchandise Trade (monthly)	11/2006	71.0	87.5
香港對外商品貿易回顧 (年刊)	Annual Review of Hong Kong External Merchandise Trade (annual)	2005	74.0	82.2
香港商品貿易指數 (月刊)	Hong Kong Merchandise Trade Index Numbers (monthly)	11/2006	22.0	26.0
對外商品貿易數字 (月刊)	External Merchandise Trade Figures (monthly)	12/2006	<-----免費 Free ----->	<-----免費 Free ----->
按產品所屬工業劃分的港產品出口統計數字 (季刊)	Domestic Exports Statistics Classified by Industrial Origin (quarterly)	Q3/2006	<-----免費 Free ----->	<-----免費 Free ----->
<b>船務統計</b>				
<b>Shipping Statistics</b>				
香港船務統計 (季刊)	Hong Kong Shipping Statistics (quarterly)	7-9/2006	50.0	58.5
<b>服務貿易統計</b>				
<b>Trade in Services Statistics</b>				
香港服務貿易統計報告 (年刊)	Report on Hong Kong Trade in Services Statistics (annual)	2004	59.0	63.4
<b>國民收入</b>				
<b>National Income</b>				
本地生產總值 (季刊)	Gross Domestic Product (quarterly)	Q3/2006	36.0	40.5
本地生產總值 (年刊) ++	Gross Domestic Product (annual) ++	2005	50.0	58.2
本地生產總值特刊, 二零零二年八月 (特刊)	Special Report on Gross Domestic Product, August 2002 (ad hoc)	-	46.0	54.2
<b>國際收支平衡</b>				
<b>Balance of Payments</b>				
香港國際收支平衡統計 一九九七年至一九九九年 (特刊)	Balance of Payments Statistics of Hong Kong 1997 to 1999 (ad hoc)	-	14.0	18.0
香港國際收支平衡統計 (季刊)	Balance of Payments Statistics of Hong Kong (quarterly)	Q3/2006	34.0	38.5
香港對外直接投資統計 (年刊)	External Direct Investment Statistics of Hong Kong (annual)	2005	42.0	46.0
<b>勞工</b>				
<b>Labour</b>				
<b>勞動人口、就業及空缺統計</b>				
<b>Labour Force, Employment and Vacancy Statistics</b>				
綜合住戶統計調查按季統計報告書	Quarterly Report on General Household Survey	7-9/2006	43.0	51.5
就業及空缺按季統計報告	Quarterly Report of Employment and Vacancies Statistics	9/2006	32.0	36.5
建築地盤就業及空缺按季統計報告	Quarterly Report of Employment and Vacancies at Construction Sites	9/2006	26.0	30.0
就業及空缺統計 (詳細統計表) (年刊) :				
Employment and Vacancies Statistics (Detailed Tables) (annual) :				
甲系列 (服務業)	Series A (Service Sectors)	2005	64.0	80.4
乙系列 (批發、零售、飲食及酒店業)	Series B (Wholesale and Retail Trades, Restaurants and Hotels)	2005	52.0	56.4
丙系列 (工業)	Series C (Industrial Sectors)	2005	92.0	108.4
丁系列 (進出口貿易業)	Series D (Import/Export Trades)	2005	45.0	49.0

政府統計處刊物一覽 (截至二零零七年二月一日) (續)

List of Publications of the Census and Statistics Department (as at 1.2.2007) (Cont'd.)

名稱	Title	最新期號##	印刷版售價(港元)	
			不包括 郵費 Not Including Postage	運本地 郵費 Including Local Postage
<b>勞工 (續)</b>	<b>Labour (Cont'd.)</b>			
<b>工資及勞工收入統計</b>	<b>Wages and Labour Earnings Statistics</b>			
工資及薪金總額按季統計報告	Quarterly Report of Wage and Payroll Statistics	9/2006	39.0	47.5
經理級與專業僱員薪金及僱員福利統計 報告 (高層管理人員除外) (年刊) §	Report of Salaries and Employee Benefits Statistics Managerial and Professional Employees (Excluding Top Management) (annual) §	2006	24.0	28.4
從事公營建築工程的工人每日平均工資 (月刊)	Average Daily Wages of Workers Engaged in Public Sector Construction Projects (monthly)	11/2006	<-----免費 Free ----->	
<b>人力統計</b>	<b>Manpower Statistics</b>			
二零零二年人力培訓及工作技能需求機構 單位統計調查報告 (特刊)	Report on 2002 Establishment Survey on Manpower Training and Job Skills Requirements (ad hoc)	-	48.0	56.2
<b>消費物價及住戶開支</b>	<b>Consumer Prices and Household Expenditure</b>			
消費物價指數月報	Monthly Report on the Consumer Price Index	12/2006	41.0	45.5
消費物價指數年報	Annual Report on the Consumer Price Index	2005	53.0	61.2
二零零四至零五年住戶開支統計調查及 重訂消費物價指數基期 (特刊)	2004/05 Household Expenditure Survey and the Rebasing of the Consumer Price Indices (ad hoc)	-	47.0	55.2
<b>工商業</b>	<b>Commerce and Industry</b>			
<b>工業生產</b>	<b>Industrial Production</b>			
工業生產按年統計調查報告	Report on Annual Survey of Industrial Production	2005	80.0	84.0
工業生產按季指數	Quarterly Index of Industrial Production	Q3/2006	8.0	11.0
製造業按季生產者價格指數	Quarterly Producer Price Indices for Manufacturing Industries	Q3/2006	8.0	11.0
紡織業生產按季統計數字	Quarterly Textile Production Statistics	Q3/2006	5.0	8.0
<b>經銷及服務業</b>	<b>Distribution and Services</b>			
批發、零售、進口與出口貿易、食肆及 酒店按年統計調查報告	Report on Annual Survey of Wholesale, Retail and Import and Export Trades, Restaurants and Hotels	2005	96.0	100.4
食肆的收入及購貨額按季統計調查報告	Report on Quarterly Survey of Restaurant Receipts and Purchases	Q3/2006	6.0	9.0
零售業銷貨額按月統計調查報告	Report on Monthly Survey of Retail Sales	11/2006	10.0	13.0
運輸及有關服務按年統計調查報告	Report on Annual Survey of Transport and Related Services	2005	79.0	83.0
倉庫業、通訊業、銀行業、財務業、保險業 及商用服務業按年統計調查報告	Report on Annual Surveys of Storage, Communication, Banking, Financing, Insurance and Business Services	2005	108.0	116.2
服務行業按季業務收益指數	Quarterly Business Receipts Indices for Service Industries	Q3/2006	11.0	14.0
服務業統計摘要 (年刊)	Statistical Digest of the Services Sector (annual)	2006	162.0	178.4
服務業統計摘要按季補充資料	Quarterly Supplement to Statistical Digest of the Services Sector	Q3/2006	44.0	53.0
<b>屋宇建築及建造</b>	<b>Building and Construction</b>			
屋宇建築、建造及地產業按年統計調查 報告	Report on Annual Survey of Building, Construction and Real Estate Sectors	2005	90.0	94.0
建造工程完成量按季統計調查報告	Report on the Quarterly Survey of Construction Output	Q3/2006	20.0	24.0
特選建築材料平均批發價格 (月刊)	Average Wholesale Prices of Selected Building Materials (monthly)	10/2006	<-----免費 Free ----->	
公營建築工程的工資及材料成本指數 (1995年6月=100) (月刊)	Index Numbers of the Costs of Labour and Materials Used in Public Sector Construction Projects (June 1995=100) (monthly)	10/2006	<-----免費 Free ----->	
公營建築工程的工資及材料成本指數 (2003年4月=100) (月刊)	Index Numbers of the Costs of Labour and Materials Used in Public Sector Construction Projects (April 2003=100) (monthly)	11/2006	<-----免費 Free ----->	
<b>能源</b>	<b>Energy</b>			
香港能源統計 (季刊)	Hong Kong Energy Statistics (quarterly)	Q3/2006	20.0	24.0
香港能源統計 (年刊)	Hong Kong Energy Statistics (annual)	2005	39.0	43.0

## 政府統計處刊物一覽 (截至二零零七年二月一日) (續)

## List of Publications of the Census and Statistics Department (as at 1.2.2007) (Cont'd.)

名稱	Title	最新期號##	印刷版售價(港元)	
			Price of Print Version (HK\$)	
			不包括 郵費 Not Including Postage	運本地 郵費 Including Local Postage
<b>工商業 (續)</b>	<b>Commerce and Industry (Cont'd.)</b>			
<b>其他經濟及工商業統計</b>	<b>Other Economic and Business Statistics</b>			
業務展望按季統計調查報告	Report on Quarterly Business Tendency Survey	Q1/2007	26.0	30.0
手頭訂單按月統計調查	Monthly Survey of Orders-on-hand	10/2003	8.0	11.0
代表香港境外母公司的駐港公司 按年統計調查報告	Report on Annual Survey of Companies in Hong Kong Representing Parent Companies Located outside Hong Kong	2006	32.0	36.4
資訊科技在工商業的使用情況 和普及程度按年統計調查報告	Report on Annual Survey on Information Technology Usage and Penetration in the Business Sector	2006	45.0	61.4
工商業創新活動按年統計調查 報告	Report on Annual Survey of Innovation Activities in the Business Sector	2005	45.0	53.2
香港 - 資訊社會 (年刊)	Hong Kong as an Information Society (annual)	2006	58.0	66.2
香港 - 知識型經濟統計透視 (特刊)	Hong Kong as a Knowledge-based Economy - A Statistical Perspective (ad hoc)	-	47.0	55.2
<b>人口</b>	<b>Population</b>			
<b>香港二零零一年人口普查</b>	<b>Hong Kong 2001 Population Census</b>			
二零零一年人口普查 (特刊)	2001 Population Census (ad hoc)			
簡要報告	Summary Results	-	38.0	46.2
主要報告 - 第一冊	Main Report - Volume I	-	84.0	100.4
主要報告 - 第二冊	Main Report - Volume II	-	66.0	82.4
主要統計表	Main Tables	-	70.0	86.4
統計圖解	Graphic Guide	-	30.0	38.2
有關各區議會分區的基本統計表	Basic Tables for District Council Districts	-	34.0	42.2
有關香港島各選區的基本統計表	Basic Tables for Constituency Areas : Hong Kong Island	-	40.0	56.4
有關九龍各選區的基本統計表	Basic Tables for Constituency Areas : Kowloon	-	48.0	64.4
有關新界各選區的基本統計表	Basic Tables for Constituency Areas : New Territories	-	74.0	102.0
區議會分區及選區統計表的附件 - 區域分界地圖	Boundary Maps Complementary to Tables for District Council Districts and Constituency Areas	-	122.0	150.0
有關各規劃統計小區的基本統計表	Basic Tables for Tertiary Planning Units	-	82.0	110.0
規劃統計小區統計表的附件 - 區域 分界地圖	Boundary Maps Complementary to Tables for Tertiary Planning Units	-	42.0	50.2
主題性報告 - 青年	Thematic Report - Youths	-	36.0	44.2
主題性報告 - 女性及男性	Thematic Report - Women and Men	-	40.0	48.2
主題性報告 - 長者	Thematic Report - Older Persons	-	36.0	44.2
主題性報告 - 少數族裔人士	Thematic Report - Ethnic Minorities	-	44.0	52.2
主題性報告 - 內地來港定居未足七年 人士	Thematic Report - Persons from the Mainland Having Resided in Hong Kong for Less Than 7 Years	-	38.0	46.2
主題性報告 - 單親人士	Thematic Report - Single Parents	-	36.0	44.2
<b>其他與人口有關的刊物</b>	<b>Other Publications relating to Population</b>			
香港人口推算 2004-2033 (特刊)	Hong Kong Population Projections 2004-2033 (ad hoc)	-	28.0	36.2
香港人口生命表 1998-2033 (特刊)	Hong Kong Life Tables 1998-2033 (ad hoc)	-	28.0	32.4
香港人口趨勢 1981-2001 (特刊)	Demographic Trends in Hong Kong 1981-2001 (ad hoc)	-	28.0	36.2
<b>社會資料</b>	<b>Social Data</b>			
從綜合住戶統計調查搜集所得的社會資料	Social Data Collected via the General Household Survey			
第四 四號專題報告書 (特刊) : 就業人士轉工情況	Special Topics Report No. 44 (ad hoc) : Job-changing of employed persons	-	50.0	54.4
主題性住戶統計調查第二 九號報告書 (特刊) :	Thematic Household Survey Report No. 29 (ad hoc) :	-	100.0	104.4
公眾對教育改革的意見	Public Views on Education Reform			
執行贍養費命令的情況	Enforcement of Maintenance Order			



政府統計處刊物一覽 (截至二零零七年二月一日) (續)

List of Publications of the Census and Statistics Department (as at 1.2.2007) (Cont'd.)

名稱	Title	最新期號##	印刷版售價(港元)	
			Price of Print Version (HK\$)	
			不包括 郵費 Not Including Postage	連本地 郵費 Including Local Postage
<b>社會資料 (續)</b>	<b>Social Data (Cont'd.)</b>			
按區議會分區劃分的人口及住戶統計資料 ( <i>年刊</i> )	Population and Household Statistics Analysed by District Council District ( <i>annual</i> )	2005	16.0	19.7
一九九八年在香港發生的罪案及罪案事主 ( <i>特刊</i> )	Crime and Its Victims in Hong Kong in 1998 ( <i>ad hoc</i> )	-	38.0	54.4
香港的女性及男性 - 主要統計數字 ( <i>年刊</i> )	Women and Men in Hong Kong - Key Statistics ( <i>annual</i> )	2006	65.0	73.2
<b>統計分類表</b>	<b>Classification Lists</b>			
香港進出口貨物分類表 (協調制度) , 二零零七年版 ( <i>特刊</i> )	Hong Kong Imports and Exports Classification List (Harmonized System), 2007 Edition ( <i>ad hoc</i> )			
第一冊: 第一至第 類貨物	Volume One: Commodity Section I - X	-	24.0	40.4
第二冊: 第 一至第二 二類貨物	Volume Two: Commodity Section XI - XXII	-	28.0	44.4
香港商品貿易統計分類表, 二零零二年版 ( <i>特刊</i> )	Hong Kong Merchandise Trade Statistics Classification, 2002 Edition ( <i>ad hoc</i> )	-	62.0	78.4
香港標準行業分類 (第一冊) ( <i>特刊</i> )++	Hong Kong Standard Industrial Classification (Volume One) ( <i>ad hoc</i> )++	-	135.0	163.0
<b>統計發展報告</b>	<b>Report on Statistical Development</b>			
統計發展概要 ( <i>年刊</i> ) §§	An Outline of Statistical Development ( <i>annual</i> ) §§	2006	51.0	59.2

註釋：除另有註明外，所有刊物均以中、英文對照形式出版。獲取刊物的方法載於第 A10 頁。

用戶可以在「香港統計數據書店」網站(www.statisticalbookstore.gov.hk)免費下載政府統計處的刊物和統計表。

## Q1、Q2、Q3、Q4代表第一、第二、第三和第四季。

++ 分別備有中文版和英文版。

§ 本刊物的印刷版亦於部分郵局出售 (查詢熱線：(852) 2921 2222)。

§§ 此刊物的2006年版亦備有唯讀光碟版(PDF格式)，售價為42港元，連本地郵費則為45港元。

所列售價及郵費日後或有修訂。外地郵費將於收到訂購要求後另行通知。

有關政府統計處刊物及其他統計產品的最新資料，請瀏覽本處網站內「產品及服務」一節(www.censtatd.gov.hk/products\_and\_services/index\_tc.jsp)或致電刊物出版組查詢(電話：(852) 2582 3025)。

Notes: Unless otherwise specified, all publications are published in bilingual format. Means of obtaining the publications are given in page A10.

Users can download publications and statistical tables of the Census and Statistics Department free of charge at the "Statistical Bookstore, Hong Kong" (www.statisticalbookstore.gov.hk).

## Q1, Q2, Q3 and Q4 represent respectively the first, second, third and fourth quarter.

++ Available in separate Chinese and English versions.

§ Print version of this publication is also put for sale at selected Post Offices (enquiry hotline: (852) 2921 2222).

§§ A CD-ROM version (in PDF format) is also available for the 2006 edition. The selling price is HK\$42, or HK\$45 if including local postage.

All quoted prices and postages are subject to revision. Postage for external mailings will be advised upon receipt of orders.

For up-to-date information of the publications and other statistical products of the Census and Statistics Department, please visit the "Products & Services" section on the website of the department (www.censtatd.gov.hk/products\_and\_services/index.jsp) or call the Publications Unit of the department at (852) 2582 3025.

政府統計處唯讀光碟產品一覽 (截至二零零七年二月一日)

List of CD-ROM Products of the Census and Statistics Department (as at 1.2.2007)

		售價不包括 郵費(港元) Price Not Including Postage (HK\$)	售價連本地 郵費(港元) Price Including Local Postage (HK\$)
<b>二零零一年人口普查</b>			
<b>2001 Population Census</b>			
- <b>統計表唯讀光碟 (不定期) ++</b> 載有372個常用統計表。有關統計表涉及的主題廣泛,包括人口、住戶、教育、經濟、房屋 內部遷移及人口分組等本港住戶及人口特徵。選定統計表亦載列按區議會分區 / 選區及規劃統計小區 / 街段劃分的統計數字。	- <b>TAB on CD-ROM (ad hoc) ++</b> Contains 372 commonly used statistical tables. The tables cover a wide range of topics including demographic, household, education, economic, housing, internal migration and home moving, and population sub-group characteristics of the households and population in Hong Kong. There are also geographical breakdown of the statistics by District Council District/Constituency Area and Tertiary Planning Unit/Street Block in selected tables.	1,690.0	1,711.2
- <b>地圖唯讀光碟 (不定期)</b> 以常用的格式提供一套數碼化的香港地圖,內載的地域分界數碼地圖包括香港海岸線、區議會分區 / 選區分界、規劃統計小區 (及其合併組) 分界、街段 - 小合併組分界及新市鎮分界。配合適當的電腦軟件,這套數碼地圖可把載於《二零零一年人口普查 - 統計表唯讀光碟》內的統計數據作地理顯示之用。	- <b>MAP on CD-ROM (ad hoc)</b> Contains a set of digital maps of Hong Kong in commonly used formats. The digital maps for geographical delineation included therein are Coastline of Hong Kong, District Council District/Constituency Area Boundary, Tertiary Planning Unit (and Groupings) Boundary, Small Street Block Group Boundary and New Town Boundary. When used with suitable computer software, the digital maps can be used for geographical presentation of the statistical data contained in the 2001 Population Census - TAB on CD-ROM.	840.0	857.0
關於購買以上兩套光碟事宜,請致電人口統計組 (電話:(852) 2716 8025)。	Please call the Demographic Statistics Section at (852) 2716 8025 for matters relating to the purchase of the above two sets of CD-ROM.		
- <b>普查易2001 (不定期)</b> 普查易2001人口普查光碟套裝是一套功能強大的知識為本產品,它能幫助使用者有效地進行客戶資訊分析和客戶關係管理的工作。普查易2001光碟內載有超過400個由政府統計處提供的香港二零零一年人口普查統計表,分區數碼地圖及功能超卓的地理訊息系統,當中包含了全香港居民的人口特徵、經濟、教育、住戶、房屋等統計數據,使用者可以透過簡單和容易使用的功能介面,來選擇和提取資料。	- <b>Hong Kong CensusPro 2001 (ad hoc)</b> CensusPro 2001 GIS CD-ROM Package is a powerful knowledge-based product that enables users to perform customer profiling and Customer Relationship Management (CRM) easily and efficiently. CensusPro 2001 includes over 400 statistical tables of the Hong Kong 2001 Population Census provided by the Census and Statistics Department, digital boundary maps, and the superb Geographical Information System (GIS) functions and features. Statistical data on the demographic, economic, education, household and housing characteristics of the population are included and can be easily selected and retrieved through intuitive and easy-to-use application interface.		) 這光碟產品由 Info Mapping (Hong Kong) Limited生產及銷售。有關查詢及訂購,請直接與該公司聯絡。(電話:(852) 2779 6088)。 ) This CD-ROM is produced and marketed by the Info Mapping (Hong Kong) Limited. For enquiries and purchase, please contact the company direct at (852) 2779 6088.
普查易2001共有4種資料輸出模式:主題性地圖、預設格式報表、統計圖表、及檔案匯出(支援數據庫/試算表/純文字等格式)。普查易2001光碟可應用於規劃業務策略、直接市場推廣或宣傳、客戶資料分析、以及作其他的商業性分析等。	CensusPro 2001 provides output in mainly 4 ways : thematic maps, formatted reports, bar/pie charts, and export files in dbf/Excel files/text files. CensusPro 2001 can be used in areas like strategic business/service planning, direct marketing and promotion, customer analysis and profiling, and many other business analysis purposes and applications.		)
- <b>SUPERMAP Hong Kong 2001 (不定期)</b> • 涵蓋全面的人口普查數據,配合最新數碼地圖作介面 • 採用具世界領導地位之地理信息系統進行處理及分析 • 可作多重圖像化分析人口普查數據 • 有助機構進行深入的市場及客戶資訊分析	- <b>SUPERMAP Hong Kong 2001 (ad hoc)</b> • Covers comprehensive population census datasets with the use of the latest digital maps as interface • Manipulates and analyses through employing world leading Geographical Information System (GIS) technology • Provides multiple views of population census data • Helps organisations with in-depth market analysis or customer profiling through data linkage		) 這些光碟產品由益百利香港有限公司生產及銷售。有關查詢及訂購,請直接與該公司聯絡。(電話:(852) 2839 5388)。 ) These CD-ROMs are produced and marketed by Experian Hong Kong Limited. For enquiries and purchase, please contact the company direct at (852) 2839 5388. ) ) ) )

政府統計處唯讀光碟產品一覽 (截至二零零七年二月一日) (續)

List of CD-ROM Products of the Census and Statistics Department (as at 1.2.2007) (Cont'd.)

		售價不包括 郵費(港元) Price Not Including Postage (HK\$)	售價連本地 郵費(港元) Price Including Local Postage (HK\$)
<b>對外商品貿易</b>	<b>External Merchandise Trade</b>		
- <b>香港對外商品貿易唯讀光碟</b> 列載過去二 五個月的按月貿易統計數字 及過往 年的按年貿易統計數字(按年數字 只載於周年報), 並包括按貨品類別 (《標 準國際貿易分類 (第三次修訂版)》或《協 調制度》)、國家/地區及運輸方式劃分的詳 細貿易統計數字。	- <b>Hong Kong External Merchandise Trade CD-ROM</b> Contains monthly trade data for past 25 months and annual trade data for past 10 years (annual figures are only available in the annual edition). Detailed statistics classified by commodity (using the "Standard International Trade Classification (Revision 3)" or the "Harmonized System"), by country/territory and by mode of transport are also included.	) 這些光碟產品由益百利香港有 ) 限公司生產及銷售。有關查詢 ) 及訂購, 請直接與該公司聯絡 ) (電話: (852) 2839 5388)。	)
- <b>香港船務統計唯讀光碟 (按季產品)</b> 列載自一九九三年以來, 按運輸方式、裝運 種類、裝貨 / 卸貨國家 / 地區及港口、貨 品、貨物種類、貨物裝卸地點及與中國內地 有關的轉運劃分的貨物及載貨貨櫃吞吐量 統計數字。	- <b>Hong Kong Shipping Statistics CD-ROM (quarterly)</b> Contains data back-dated to 1993 on cargo and laden container throughput statistics analysed by mode of transport, shipment type, country/territory and port of loading/discharge, commodity cargo type, cargo handling location and transshipment related to the mainland of China.	) These CD-ROMs are produced ) and marketed by Experian Hong ) Kong Limited. For enquiries ) and purchase, please contact the ) company direct at (852) ) 2839 5388.	)

註釋: ++ 分別備有中文版和英文版。

所列售價及郵費日後或有修訂。外地郵費將於收到訂購要求  
後另行通知。

有關政府統計處刊物及其他統計產品的最新資料, 請瀏覽本  
處網站內「產品及服務」一節 ([www.censtatd.gov.hk/products  
\\_and\\_services/index\\_tc.jsp](http://www.censtatd.gov.hk/products_and_services/index_tc.jsp)) 或致電刊物出版組查詢 (電話:  
(852) 2582 3025)。

Notes: ++ Available in separate Chinese and English versions.

All quoted prices and postages are subject to revision. Postage for  
external mailings will be advised upon receipt of orders.

For up-to-date information of the publications and other statistical  
products of the Census and Statistics Department, please visit the  
"Products & Services" section on the website of the department  
([www.censtatd.gov.hk/products\\_and\\_services/index.jsp](http://www.censtatd.gov.hk/products_and_services/index.jsp)) or call the  
Publications Unit of the department at (852) 2582 3025.

**獲取政府統計處刊物及其他統計產品的方法**  
Means of Obtaining Publications and Other Statistical Products  
of the Census and Statistics Department

**網站**

用戶可以在政府統計處網站 ([www.censtatd.gov.hk/products\\_and\\_services/products/publications/index\\_tc.jsp](http://www.censtatd.gov.hk/products_and_services/products/publications/index_tc.jsp)) 免費下載統計刊物。

政府統計處刊物的印刷版於統計處的香港統計數據書店 ([www.statisticalbookstore.gov.hk](http://www.statisticalbookstore.gov.hk)) 和政府新聞處的政府書店 ([www.bookstore.gov.hk](http://www.bookstore.gov.hk)) 網站有售。在網上購買印刷版的統計刊物，可享有原價八五折優惠。統計處的唯一讀光碟產品也於香港統計數據書店網站有售。

**郵購服務**

本處大部分的刊物均附有郵購表格，供訂購或按期訂閱刊物的印刷版。請填妥郵購表格，連同所需費用和郵費的支票或匯票寄回辦理。郵購表格亦可在政府統計處網站下載 ([www.censtatd.gov.hk/products\\_and\\_services/other\\_services/provision\\_of\\_stat/mail\\_ordering\\_of\\_publications/index\\_tc.jsp](http://www.censtatd.gov.hk/products_and_services/other_services/provision_of_stat/mail_ordering_of_publications/index_tc.jsp))。

**銷售中心**

市民可親臨政府統計處刊物出版組購買刊物的印刷版和唯一讀光碟產品，並即時提取。刊物出版組的地址是：

香港灣仔港灣道 二號  
灣仔政府大樓 九樓

電話：(852) 2582 3025  
圖文傳真：(852) 2827 1708

該組設有一個閱讀區，讓使用者翻閱架上陳列的各類統計處出版的刊物。閱讀區也備有統計處編製的宣傳／教育單張和小冊子，歡迎索閱。

**Website**

Users may download statistical publications free of charge from the website of the Census and Statistics Department ([www.censtatd.gov.hk/products\\_and\\_services/products/publications/index.jsp](http://www.censtatd.gov.hk/products_and_services/products/publications/index.jsp)).

Print versions of publications of the Census and Statistics Department are available for sale online at the Statistical Bookstore of the Department ([www.statisticalbookstore.gov.hk](http://www.statisticalbookstore.gov.hk)) and the Government Bookstore of the Information Services Department ([www.bookstore.gov.hk](http://www.bookstore.gov.hk)). Print versions if purchased online are offered a discount, at 85% of their original prices. The Statistical Bookstore also offers for sale CD-ROM products of the Department.

**Mail Order Service**

A mail order form for ordering or subscribing to print versions of publications is available in most of the Department's publications. Completed form should be sent back together with a cheque or bank draft covering all necessary cost and postage. The order form is also available for downloading from the website of the Department ([www.censtatd.gov.hk/products\\_and\\_services/other\\_services/provision\\_of\\_stat/mail\\_ordering\\_of\\_publications/index.jsp](http://www.censtatd.gov.hk/products_and_services/other_services/provision_of_stat/mail_ordering_of_publications/index.jsp)).

**Sales Centre**

Print versions of publications and CD-ROM products are available for purchase and collection on the spot at the Publications Unit of the Census and Statistics Department at the following address :

19/F Wanchai Tower  
12 Harbour Road, Wan Chai, Hong Kong.

Tel. : (852) 2582 3025  
Fax : (852) 2827 1708

The Unit also provides a reading area where users may browse through various publications of the Department on display. Publicity/educational leaflets and pamphlets of the Department are also available for collection.

# 郵購表格 (只適用於印刷版)

致：香港花園道 美利大廈4樓 政府新聞處 刊物銷售小組 電話：(852) 2842 8844 或 (852) 2842 8845 圖文傳真：(852) 2598 7482	售價			請註明 刊期(月份/季/ 期號及年份)		合計 所需的 期數 (b)	總計 (港元) (a) x (b)
	每本 (港元) (1)	本地 郵費 (2)及(3) (港元)	合計 (港元) (a)	由	至		
1. 香港統計月刊 (二零零七年期刊) (J470007 B0)	100.0	16.5	116.5	/2007	12/2007		
2. 香港經濟趨勢 (二零零七年期刊) (半月刊) (J410007 B0)	18.0	3.0	21.0	/2007	24/2007		
3. 香港統計年刊 (二零零六年版) (J47010600B0)	122.0	28.0	150.0	-	-		
4. 香港社會及經濟趨勢 (二零零五年版) (雙年刊) (J57290500B0)	110.0	16.4	126.4	-	-		
5. 統計發展概要 (二零零六年版) (年刊) <sup>(4)</sup> (J33110600B0)	51.0	8.2	59.2	-	-		
6. 香港的發展 (1967-2002) - 統計圖表集 (J69090300B0)	38.0	16.4	54.4	-	-		
7. 二零零五年香港對外直接投資統計 (J33760500B0)	42.0	4.0	46.0	-	-		
8.							
9.							
10.							

本人現付上支票 (編號：\_\_\_\_\_ ) 港幣 \_\_\_\_\_ 元，購買上述刊物。  
(註：支票應予劃線，並註明支付「香港特別行政區政府」。)

姓名：\_\_\_\_\_ 職銜：\_\_\_\_\_

機構名稱：\_\_\_\_\_ 地址：\_\_\_\_\_

電話：\_\_\_\_\_ 圖文傳真：\_\_\_\_\_

日期：\_\_\_\_\_

- 註： (1) 此為印刷版的售價。在政府統計處的香港統計數據書店網站 ([www.statisticalbookstore.gov.hk](http://www.statisticalbookstore.gov.hk)) 或政府新聞處的政府書店網站 ([www.bookstore.gov.hk](http://www.bookstore.gov.hk)) 購買印刷版，可享有原價八五折優惠。
- (2) 外地的訂戶暫時無須付上支票，所需郵費將於收到訂購表格後另行通知。
- (3) 訂購超過一本相同名稱的年刊或特刊，請向政府新聞處查詢所需的本地郵費 (電話：(852) 2842 8844或(852) 2842 8845，圖文傳真：(852) 2598 7482)。
- (4) 此刊物亦備有唯讀光碟版，每隻售價為 42 港元。如欲訂購，請到網上「香港統計數據書店」 ([www.statisticalbookstore.gov.hk](http://www.statisticalbookstore.gov.hk))。

你在表格上提供的資料，只會用作辦理書刊訂購事宜，不會向任何和訂購無關的人士透露。如欲查看或更改所填報的資料，請與政府新聞處刊物銷售小組聯絡。地址：香港花園道美利大廈4樓。



# Mail Order Form (Applicable to print versions only)

To : Publications Sales Unit Information Services Department 4/F Murray Building Garden Road Hong Kong Tel. : (852) 2842 8844 or (852) 2842 8845 Fax : (852) 2598 7482	Price			Please indicate Month/Quarter/ Issue no. and Year		Total no. of issue(s) required (b)	Total amount (HK\$) (a) x (b)
	Per copy (HK\$) (1)	Local postage (2) & (3) (HK\$)	Total (HK\$) (a)	From	To		
1. Hong Kong Monthly Digest of Statistics 2007 issues (J470007 B0)	100.0	16.5	116.5	/2007	12/2007		
2. Hong Kong Economic Trends 2007 issues (half-monthly) (J410007 B0)	18.0	3.0	21.0	/2007	24/2007		
3. Hong Kong Annual Digest of Statistics 2006 edition (J47010600B0)	122.0	28.0	150.0	-	-		
4. Hong Kong Social and Economic Trends 2005 edition (biennial) (J57290500B0)	110.0	16.4	126.4	-	-		
5. An Outline of Statistical Development 2006 edition (annual) <sup>(4)</sup> (J33110600B0)	51.0	8.2	59.2	-	-		
6. A Graphic Guide on Hong Kong's Development (1967-2002) (J69090300B0)	38.0	16.4	54.4	-	-		
7. External Direct Investment Statistics of Hong Kong 2005 (J33760500B0)	42.0	4.0	46.0	-	-		
8.							
9.							
10.							

I enclose a cheque (No. \_\_\_\_\_) of HK\$ \_\_\_\_\_ for the payment of the above order. (Note : The cheque should be crossed and made payable to "The Government of the Hong Kong Special Administrative Region" or "The Government of the HKSAR".)

Name : \_\_\_\_\_ Title of post : \_\_\_\_\_

Name of organisation : \_\_\_\_\_ Address : \_\_\_\_\_

Tel. : \_\_\_\_\_ Fax : \_\_\_\_\_

Date : \_\_\_\_\_

- Notes :
- (1) These refer to the price of the print version of publications. Print versions if purchased online at the Statistical Bookstore of the Census and Statistics Department ([www.statisticalbookstore.gov.hk](http://www.statisticalbookstore.gov.hk)) or the Government Bookstore of the Information Services Department ([www.bookstore.gov.hk](http://www.bookstore.gov.hk)) are offered a discount, at 85% of their original prices.
  - (2) For mailings to addresses outside Hong Kong, please do not send in a cheque now. The required postage will be advised upon receipt of order.
  - (3) For an order of multiple copies of an annual or ad hoc publication with the same title, please consult the Information Services Department about the required local postage. (Tel. : (852) 2842 8844 or (852) 2842 8845, Fax : (852) 2598 7482).
  - (4) This publication is also available in CD-ROM version at HK\$42 per copy. For ordering, please visit the "Statistical Bookstore, Hong Kong" ([www.statisticalbookstore.gov.hk](http://www.statisticalbookstore.gov.hk)).

The information provided herein will only be used for processing your order of publications and will not be disclosed to parties which are not involved in the processing. You may seek access to or correction of the information by addressing your request to the Publications Sales Unit, Information Services Department, 4/F Murray Building, Garden Road, Hong Kong .





訂閱表格 (只適用於印刷版)  
香港統計月刊 二零零七年期刊

Subscription Form (Applicable to print versions only)  
Hong Kong Monthly Digest of Statistics 2007 Issues

致：香港灣仔港灣道 二號  
灣仔政府大樓 九樓  
政府統計處綜合統計組 (一) 乙  
電話：(852)2582 3025 圖文傳真：(852)2827 1708

To：General Statistics Section (1) B  
Census and Statistics Department  
19/F Wanchai Tower  
12 Harbour Road, Wan Chai, Hong Kong  
Tel. : (852) 2582 3025 Fax : (852) 2827 1708

請在適當空格 (□) 內加上 (√) 號。Please tick (√) the appropriate box (□). (港元 HK\$)

刊物名稱 Title of Publication	每本 售價 Price per copy (1)	每本 本地郵費 Local postage (2) & (3)	每本 合計 Total price (a)	期數 No. of issues (b)	總計 Total amount (a) x (b)
<input type="checkbox"/> 香港統計月刊 二零零七年期刊一月至 二月 (共 二期) Hong Kong Monthly Digest of Statistics January to December 2007 (total 12 issues)	100.0	16.5	116.5	12	1,398.0
<input type="checkbox"/> 香港統計月刊 二零零七年期刊____月至十二月 (共____期) Hong Kong Monthly Digest of Statistics _____ to December 2007 (total _____ issues)	100.0	16.5	116.5		
<input type="checkbox"/>					
合計 Total					

本人現付上支票 (編號：\_\_\_\_\_ ) 港幣 \_\_\_\_\_ 元，購買上述刊物。  
I enclose a cheque (No. \_\_\_\_\_) of HK\$ \_\_\_\_\_ for the payment of the above order.

註：支票應予劃線，並註明支付「香港特別行政區政府」。

Note: Cheque should be crossed and made payable to "The Government of the Hong Kong Special Administrative Region" or "The Government of the HKSAR".

訂戶資料 **Subscriber's Information**

姓名 Name : \_\_\_\_\_ 機構名稱 Name of organisation : \_\_\_\_\_

職銜 Title of post : \_\_\_\_\_ 地址 Address : \_\_\_\_\_

部門 Department : \_\_\_\_\_

電話 Tel. : \_\_\_\_\_

圖文傳真 Fax : \_\_\_\_\_ 日期 Date : \_\_\_\_\_

機構主要業務類別 **Major line of business of organisation :**

- |  |  |
|--|--|
| <input type="checkbox"/> 進口與出口貿易業 Import and export trade    | <input type="checkbox"/> 建造業 Construction                                    |
| <input type="checkbox"/> 零售貿易業 Retail trade                  | <input type="checkbox"/> 金融、保險及地產業 Financing, insurance and real estate      |
| <input type="checkbox"/> 製造業 Manufacturing                   | <input type="checkbox"/> 商用服務業 Business services                             |
| <input type="checkbox"/> 教育機構 Educational institution        | <input type="checkbox"/> 社區、社會及個人服務業 Community, social and personal services |
| <input type="checkbox"/> 其他，請註明 Others, please specify _____ |  |

讀者類別 (可選多項) **Readership (more than one choice allowed) :**

- |   |   |
|---|---|
| <input type="checkbox"/> 經理 Manager                   | <input type="checkbox"/> 市場、推廣部人員 Marketing / promotional personnel |
| <input type="checkbox"/> 分析員、研究員 Analyst / researcher | <input type="checkbox"/> 教師、大專院校講師 Teaching staff / lecturer        |
| <input type="checkbox"/> 學生 Student                   | <input type="checkbox"/> 其他，請註明 Others, please specify _____        |

訂戶類別 **Type of subscriber :**

- |  |  |
|--|--|
| <input type="checkbox"/> 機構 Organisation | <input type="checkbox"/> 私人 Individual |
|--|--|

你是否願意收到本處其他刊物的推廣資料? Do you want to receive promotional materials of other publications of this department?

- |                                |                               |       |
|--------------------------------|-------------------------------|-------|
| <input type="checkbox"/> 是 Yes | <input type="checkbox"/> 否 No | HKMDS |
|--------------------------------|-------------------------------|-------|

註：(1) 此為印刷版的售價。在政府統計處的香港統計數據書店網站 (www.statisticalbookstore.gov.hk) 或政府新聞處的政府書店網站 (www.bookstore.gov.hk) 購買印刷版，可享有原價八五折優惠。

This refers to the price of the print version of the publication. Print versions if purchased online at the Statistical Bookstore of the Census and Statistics Department (www.statisticalbookstore.gov.hk) or the Government Bookstore of the Information Services Department (www.bookstore.gov.hk) are offered a discount, at 85% of their original prices.

(2) 外地的訂戶暫時無須付上支票，所需郵費將於收到訂購表格後另行通知。

For mailings to addresses outside Hong Kong, please do not send in a cheque now. The required postage will be advised upon receipt of order.

(3) 訂閱超過一本相同名稱及期號的刊物，請向政府新聞處查詢所需的本地郵費 (電話：(852) 2842 8844 或 (852) 2842 8845，圖文傳真：(852) 2598 7482)。

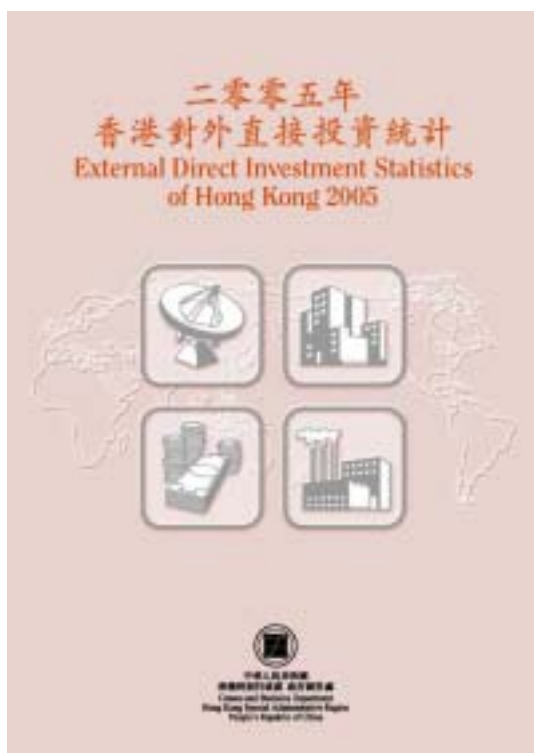
For subscription to multiple copies per issue with the same title, please consult the Information Services Department about the required local postage. (Tel. : (852) 2842 8844 or (852) 2842 8845, Fax : (852) 2598 7482).

你在表格上提供的資料，只會用作辦理書刊訂購事宜，不會向任何和訂購無關的人士透露。如欲查看或更改所填報的資料，請與政府統計處的資料管理人員聯絡。地址：香港灣仔港灣道 二號灣仔政府大樓二 一樓。

The information provided herein will only be used for processing your order of publications and will not be disclosed to parties which are not involved in the subscription of these publications. You may seek access to or correction of the information by addressing your request to the Data Controlling Officer, Census and Statistics Department, 21/F Wanchai Tower, 12 Harbour Road, Wan Chai, Hong Kong.

# 二零零五年香港對外直接投資統計

## *External Direct Investment Statistics of Hong Kong 2005*



這份報告書載錄二零零五香港對外直接投資統計數字，包括：

- 📖 按投資者國家／地區劃分的外來直接投資頭寸及流動數字
- 📖 按接受投資國家／地區劃分的向外直接投資頭寸及流動數字
- 📖 直接投資者對香港投資環境的意見
- 📖 以及更多有關香港對外直接投資的詳細資料……

This report contains external direct investment statistics of Hong Kong for 2005, including:

- 📖 Position and flow data of inward direct investment by investor country/territory
- 📖 Position and flow data of outward direct investment by recipient country/territory
- 📖 Opinions of direct investors on investment environment of Hong Kong
- 📖 And more detailed information on external direct investment in Hong Kong.....

有關獲取本刊物的方法，請參閱本月刊內第A10頁。此外，刊物的郵購表格亦刊載於第A11頁。

For the means of obtaining this publication, please see page A10 of this Digest. A mail order form for the publication is also available on page A12.



# 香港進出口貨物分類表（協調制度）

二零零七年版

## Hong Kong Imports and Exports Classification List (Harmonized System)

2007 Edition



由二零零七年一月一日起，所有進口或出口貨品  
（豁免貨品除外）必須以新版本內的  
貨物編號及數量單位報關。

As from 1 January 2007, all imported or exported goods  
(excluding exempted articles) should be declared  
using the commodity codes and units of quantity  
in accordance with the new edition.

上述刊物於二零零六年十一月開始發售

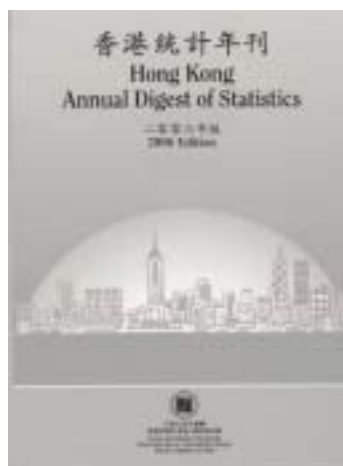
The above publication is available for sale as from November 2006

有關獲取本刊物的方法，請參閱第A10頁。

Please refer to page A10 for the means of obtaining this publication.

# 二零零六年版《香港統計年刊》

## 2006 Edition of Hong Kong Annual Digest of Statistics



本年刊是內容全面而方便參考的官方統計資料匯編。年刊載有約 300 個統計表，所涉及的題材廣泛，包括：

- ◆ 人口、出生、死亡、婚姻及家庭住戶
- ◆ 勞工
- ◆ 對外貿易
- ◆ 工業生產
- ◆ 商業
- ◆ 科技
- ◆ 土地、樓宇、建造及地產
- ◆ 房屋及物業
- ◆ 運輸、通訊、旅遊
- ◆ 政府收支、貨幣、金融
- ◆ 物價、食物供應
- ◆ 教育
- ◆ 衛生
- ◆ 社會福利
- ◆ 治安
- ◆ 文化、娛樂、康樂
- ◆ 環境、氣候、地理
- ◆ 國民收入及國際收支平衡

本年刊旨在提供有關香港社會及經濟發展各範疇的詳盡按年統計數列，所刊載的大部分數據是以 7 年為一組發表，即最近 6 年和對上第 11 年，以助讀者比較過去 10 年或每 5 年期的發展。有關年刊內統計資料的範圍和性質說明，以及用語的定義和概念的解釋，載於每章的「概念及定義」一節內。

The Annual Digest is a comprehensive and convenient collection of official statistics. It contains some 300 statistical tables on a wide range of topics, including :

- ◆ Population, Birth, Death, Marriage and Domestic Household
- ◆ Labour
- ◆ External Trade
- ◆ Industrial Production
- ◆ Commerce
- ◆ Science and Technology
- ◆ Land, Building, Construction and Real Estate
- ◆ Housing and Property
- ◆ Transport, Communications and Tourism
- ◆ Public Accounts, Money and Finance
- ◆ Prices and Food Supplies
- ◆ Education
- ◆ Health
- ◆ Social Welfare
- ◆ Law and Order
- ◆ Culture, Entertainment and Recreation
- ◆ Environment, Climate and Geography
- ◆ National Income and Balance of Payments

This publication aims to provide detailed annual statistical series on various aspects of the social and economic developments of Hong Kong. Most of the data are presented in respect of 7 years : the most recent 6 years and the last 11th year. This serves to facilitate comparisons over the past decade or at 5-year intervals. Descriptions of the scope and nature of the statistical data together with definitions of the terms and explanations of the concepts used in this Digest are provided in the "Concepts and Definitions" part in each chapter.

有關獲取刊物（包括購買和免費下載）的方法，請參閱本月刊內第 A10 頁，此外，刊物的郵購表格亦刊載於第 A11 頁。For the means of obtaining the publication (including purchase and free download), please see page A10 of this Digest. A mail order form for the publication is also available on page A12.

除上述外，本刊物亦於部分郵局出售（查詢熱線：(852) 2921 2222）及書店（即商務印書館、三聯書店、辰衝圖書有限公司及香港圖書文具有限公司）出售。

Apart from the above, this publication is also available for sale at selected Post Offices (Enquiry hotline:(852) 2921 2222) and commercial bookstores, namely, The Commercial Press, Joint Publishing, Swindon Book Co., Ltd. and Hong Kong Book Centre.

# 二零零七年度消費物價指數月報

## Monthly Report on the Consumer Price Index (2007 Issues)



月報包括以下有關消費物價指數的變動情況：

- ☞ 詳細描述綜合、甲類、乙類及丙類消費物價指數內各類商品/服務指數的變動情況
- ☞ 分析商品/服務組別在各項消費物價指數變動率中所佔的比率
- ☞ 以統計表列載各類商品/服務指數的變動情況及其在總指數變動率中所佔的比率和經季節性調整的消費物價指數的變動情況
- ☞ 以統計圖描繪消費物價指數的總指數及類別指數的變動情況

The monthly report includes the following information on the movements of the Consumer Price Indices :

- ☞ Detailed descriptions of the movements of the Composite CPI, CPI(A), CPI(B) and CPI(C) by commodity/service categories
- ☞ Contribution analysis of the changes in the CPIs by commodity/service section
- ☞ Tables showing the CPIs by commodity/service categories, their contributions to the change in the overall indices, and the movements of the seasonally adjusted indices
- ☞ Charts depicting the movements of the overall CPIs and the CPI section indices

有關刊物的銷售途徑，請參閱本月刊第A10頁。此外，刊物的訂閱表格亦刊載於下頁。  
For the purchase channels of the publication, please see page A10 of this Digest. A subscription form is also available on the following page for ordering the publication.



**訂閱表格 (只適用於印刷版)**  
**消費物價指數月報 二零零七年期刊**

**Subscription Form (Applicable to print versions only)**  
**Monthly Report on the Consumer Price Index 2007 Issues**

致：香港九龍紅磡蕪湖街 83 號  
莊士紅磡廣場 22 樓  
政府統計處消費物價指數組  
電話：(852) 2805 6403 圖文傳真：(852) 2577 6253

To：Consumer Price Index Section,  
Census and Statistics Department  
22/F, Chuang's Hung Hom Plaza,  
83 Wuhu Street, Hung Hom, Kowloon, Hong Kong.  
Tel. : (852) 2805 6403 Fax : (852) 2577 6253

請在適當空格 (□) 內加上 (√) 號。Please tick (√) the appropriate box (□).

(港元 HK\$)

刊物名稱 Title of Publication	每本售價 Price per copy (1)	每本本地郵費 Local postage (2) & (3)	每本合計 Total price (a)	期數 No. of issues (b)	總計 Total amount (a)x(b)
<input type="checkbox"/> 消費物價指數月報 二零零七年期刊一月至 二月 (共 二期) Monthly Report on the Consumer Price Index January to December 2007 (total 12 issues)	49.0	4.5	53.5	12	642.0
<input type="checkbox"/> 消費物價指數月報 二零零七年期刊__月至 二月 (共__期) Monthly Report on the Consumer Price Index _____ to December 2007 (total _____ issues)	49.0	4.5	53.5		
<input type="checkbox"/>					
合計 Total					

本人現付上支票 (編號：\_\_\_\_\_ ) 港幣 \_\_\_\_\_ 元，購買上述刊物。  
I enclose a cheque (No. \_\_\_\_\_) of HK\$ \_\_\_\_\_ for the payment of the above order.

註：支票應予劃線，並註明支付「香港特別行政區政府」。

Note: Cheque should be crossed and made payable to "The Government of the Hong Kong Special Administrative Region" or "The Government of the HKSAR".

**訂戶資料 Subscriber's Information**

姓名 Name : \_\_\_\_\_ 機構名稱 Name of organisation : \_\_\_\_\_  
職銜 Title of post : \_\_\_\_\_ 地址 Address : \_\_\_\_\_  
部門 Department: \_\_\_\_\_  
電話 Tel.: \_\_\_\_\_  
圖文傳真 Fax : \_\_\_\_\_ 日期 Date : \_\_\_\_\_

**機構主要業務類別 Major line of business of organisation:**

- |  |  |
|--|--|
| <input type="checkbox"/> 進口與出口貿易業 Import and export trade    | <input type="checkbox"/> 建造業 Construction                                    |
| <input type="checkbox"/> 零售貿易業 Retail trade                  | <input type="checkbox"/> 金融、保險及地產業 Financing, insurance and real estate      |
| <input type="checkbox"/> 製造業 Manufacturing                   | <input type="checkbox"/> 商用服務業 Business services                             |
| <input type="checkbox"/> 教育機構 Educational institution        | <input type="checkbox"/> 社區、社會及個人服務業 Community, social and personal services |
| <input type="checkbox"/> 其他，請註明 Others, please specify _____ |  |

**讀者類別 (可選多項) Readership (more than one choice allowed):**

- |   |   |
|---|---|
| <input type="checkbox"/> 經理 Manager                   | <input type="checkbox"/> 市場、推廣部人員 Marketing / promotional personnel |
| <input type="checkbox"/> 分析員、研究員 Analyst / researcher | <input type="checkbox"/> 教師、大專院校講師 Teaching staff / lecturer        |
| <input type="checkbox"/> 學生 Student                   | <input type="checkbox"/> 其他，請註明 Others, please specify _____        |

**訂戶類別 Type of subscriber :**

- 機構 Organisation  私人 Individual

你是否願意收到本處其他刊物的推廣資料？Do you want to receive promotional materials of other publications of this department?

- 是 Yes  否 No

註：(1) 此為印刷版的售價。在政府統計處的香港統計數據書店網站 (www.statisticalbookstore.gov.hk) 或政府新聞處的政府書店網站 (www.isd.gov.hk/chi/bookorder.htm) 購買印刷版，可享有原價八折優惠。

Notes : This refers to the price of the print version of the publication. Print versions if purchased online at the Statistical Bookstore of the Census and Statistics Department (www.statisticalbookstore.gov.hk) or the Government Bookstore of the Information Services Department (www.isd.gov.hk/eng/bookorder.htm) are offered a discount, at 85% of their original prices.

(2) 外地的訂戶暫時無須付上支票，所需郵費將於收到訂購表格後另行通知。

For mailings to addresses outside Hong Kong, please do not send in a cheque now. The required postage will be advised upon receipt of order.

(3) 訂閱超過一本相同名稱及期號的刊物，請向政府新聞處查詢所需的本地郵費 (電話：(852) 2842 8844 或 (852) 2842 8845，圖文傳真：(852) 2598 7482)。

For subscription to multiple copies per issue with the same title, please consult the Information Services Department about the required local postage. (Tel. : (852) 2842 8844 or (852) 2842 8845, Fax : (852) 2598 7482).

你在表格上提供的資料，只會用作辦理書刊訂購事宜，不會向任何和訂購無關的人士透露。如欲查看或更改所填報的資料，請與政府統計處的資料管理人員聯絡。地址：香港灣仔港灣道 二號灣仔政府大樓二 一樓。

The information provided herein will only be used for processing your order of publications and will not be disclosed to parties which are not involved in the subscription of these publications. You may seek access to or correction of the information by addressing your request to the Data Controlling Officer, Census and Statistics Department, 21/F Wanchai Tower, 12 Harbour Road, Wan Chai, Hong Kong.

# 二零零五年經濟統計調查報告

## 下列人士必備的參考資料

市場分析員  
投資者  
經濟分析員  
商界專業人士



## 載列有關各種行業結構特徵的最新統計數字，包括：

- 生產總值、銷貨總額、業務收益及其他收入
- 增加價值(用以量度對本地生產總值的貢獻)
- 購入貨品及原料的總值
- 其他營運開支
- 固定資產的買賣淨值
- 機構單位數目、僱員薪酬

## 郵購表格

刊物名稱	本數	單價@	本地郵費*	合計
1. 二零零五年工業生產按年統計調查報告 (J33010500B0)	_____	x (港幣 80 元 + 港幣 4.0 元) = 港幣 _____ 元		
2. 二零零五年屋宇建築、建造及地產業按年統計調查報告 (J33080500B0)	_____	x (港幣 90 元 + 港幣 4.0 元) = 港幣 _____ 元		
3. 二零零五年批發、零售、進口與出口貿易、食肆及酒店按年統計調查報告 (J33090500B0)	_____	x (港幣 96 元 + 港幣 4.4 元) = 港幣 _____ 元		
4. 二零零五年運輸及有關服務按年統計調查報告 (J33060500B0)	_____	x (港幣 79 元 + 港幣 4.0 元) = 港幣 _____ 元		
5. 二零零五年倉庫業、通訊業、銀行業、財務業、保險業及商用服務業按年統計調查報告 (J33070500B0)	_____	x (港幣 108 元 + 港幣 8.2 元) = 港幣 _____ 元		

\* 海外郵費於本處收到訂購要求後另行通知。

本人現附上支票(編號：\_\_\_\_\_ )港幣 \_\_\_\_\_ 元，購買上述刊物。

(註：支票應予劃線，並註明支付「香港特別行政區政府」。)

公司名稱 \_\_\_\_\_  
姓 名 \_\_\_\_\_  
職 位 \_\_\_\_\_  
地 址 \_\_\_\_\_  
電話號碼 \_\_\_\_\_ 圖文傳真 \_\_\_\_\_

貴公司從事的業務：

- 製造業  屋宇建築及建造業  
 運輸業  商用服務業  
 批發、零售、進出口貿易、飲食及酒店業  
 其他，請註明 \_\_\_\_\_

你在表格上所提供的資料，只會用作辦理書刊訂購事宜，不會向任何和訂購無關的人士透露。如欲查看或更改所填報的資料，請與政府統計處的資料管理人員聯絡。  
地址：香港灣仔港灣道 12 號灣仔政府大樓 21 樓。

@ 此為印刷版的售價。除印刷版外，這些統計調查報告書亦可在「香港統計數據書店」網站(<http://www.statisticalbookstore.gov.hk>)免費下載(PDF 格式)。在香港統計數據書店網站購買印刷版，可享原價八五折優惠。

請交回：政府統計處  
經銷服務統計組  
香港九龍紅磡蕪湖街 83 號  
莊士紅磡廣場 19 樓  
電話：2802 1264



中華人民共和國  
香港特別行政區 政府統計處  
Census and Statistics Department  
Hong Kong Special Administrative Region  
People's Republic of China

# Reports on 2005 Economic Surveys

## Essential references for

Market Analysts  
Investors  
Economic Analysts  
Business Professionals

## Contain latest statistics on structural characteristics of various industries/trades, including:

- gross output, sales of goods, business receipts and other income
- value added (a measure of contribution to gross domestic product)
- purchases of goods and materials
- other operating expenses
- gross additions to fixed assets
- number of establishments, compensation of employees



## Mail Order Form

Title of publications	Number of copies	Unit <sup>®</sup> price	Postage* for local mailings	Total amount
1. Report on 2005 Annual Survey of Industrial Production (J33010500B0)	_____	x (HK\$80	+ HK\$4.0) =	HK\$ _____
2. Report on 2005 Annual Survey of Building, Construction and Real Estate Sectors (J33080500B0)	_____	x (HK\$90	+ HK\$4.0) =	HK\$ _____
3. Report on 2005 Annual Survey of Wholesale, Retail and Import and Export Trades, Restaurants and Hotels (J33090500B0)	_____	x (HK\$96	+ HK\$4.4) =	HK\$ _____
4. Report on 2005 Annual Survey of Transport and Related Services (J33060500B0)	_____	x (HK\$79	+ HK\$4.0) =	HK\$ _____
5. Report on 2005 Annual Surveys of Storage, Communication, Banking, Financing, Insurance and Business Services (J33070500B0)	_____	x (HK\$108	+ HK\$8.2) =	HK\$ _____

\* Postage for overseas mailings will be advised upon receipt of order.

I enclose a cheque (No. \_\_\_\_\_) of HK\$ \_\_\_\_\_ for the payment of the above order (cheque should be crossed and made payable to "The Government of the Hong Kong Special Administrative Region").

Company Name _____	Business engaged by your company
Name _____	<input type="checkbox"/> Manufacturing <input type="checkbox"/> Building & construction
Designation _____	<input type="checkbox"/> Transport <input type="checkbox"/> Business services
Address _____	<input type="checkbox"/> Wholesale, retail, import & export, restaurants & hotels
Tel No. _____ Fax No. _____	<input type="checkbox"/> Others, please specify _____

The information provided herein will only be used for processing your order of publications and will not be disclosed to parties which are not involved in the purchase of these publications. You may seek access to or correction of the information by addressing your request to the Data Controlling Officer, Census and Statistics Department, 21/F Wanchai Tower, 12 Harbour Road, Wan Chai, Hong Kong.

@ These refer to the price of print version of publications. Apart from print versions, the download versions of publications are also available for download (in PDF format) free of charge at the "Statistical Bookstore, Hong Kong" (<http://www.statisticalbookstore.gov.hk>). Print versions if purchased online are offered a discount and are sold at 85% of their original prices at the Statistical Bookstore.

Please send to : Census and Statistics Department  
(Attn: Distribution Services Statistics Section)  
19/F Chuang's Hung Hom Plaza,  
83 Wuhu Street, Hung Hom, Kowloon, Hong Kong.  
Tel. : 2802 1264



中華人民共和國  
香港特別行政區 政府統計處  
Census and Statistics Department  
Hong Kong Special Administrative Region  
People's Republic of China

# 專業統計 服務市民

香港特別行政區政府  
政府統計處

香港

政府資訊中心 繁體純文字 簡體版 ENGLISH 搜尋 網頁指南

· 主頁

- 最新消息
- 關於我們
- 主要計劃、事項及發展
- 香港統計資料
- 新聞稿及記者招待會
- 產品及服務
- 傳媒專區
- 統計調查受訪者專區
- 貿易事宜專區
- 統計認知及學生專區
- 相關網址
- 服務台

二零零六年中期人口統計

香港統計數據書店

查閱貨物分類編號

重點提要

- **二零零五年十一月份的零售業銷售額臨時統計數字**  
二零零五年十一月份的零售業總銷售額的臨時估計為158億元，較上年同月上升4.2%。  
[更多資料](#)
- **《主題性住戶統計調查第二十四號報告書》出版**  
《主題性住戶統計調查第二十四號報告書》列載於二零零四年十一月至二零零五年一月期間進行的主題性住戶統計調查的結果，當中包括香港居民使用非專營巴士服務的情況及對《基本法》的認識等主題。  
[更多資料](#)
- **二零零五年九月工資及薪金總額統計數字**  
二零零五年九月的平均工資率，以名義工資指數計算，較上年同期上升0.8%。薪金總額統計方面，二零零五年第三季的就業人士名義平均薪金指數較上年同期上升3.2%。  
[更多資料](#)

RSS 按此獲取以RSS形式發放的最新提要  
[關於RSS](#)

人口、住戶及機構統計數字  
[關於觀看此地圖](#)

主要統計指標  
主要經濟及社會統計指標  
[更多資料](#)

香港統計資料

- 人口及生命事件
- 勞工
- 對外貿易
- 工業生產
- 商業
- 科技
- 土地、樓宇、建造及地產
- 房屋及物業
- 運輸、通訊及旅遊
- 政府收支、貨幣、金融
- 物價
- 教育
- 衛生
- 社會福利
- 治安
- 文化、娛樂、康樂
- 環境、氣候及地理
- 能源
- 國民收入及國際收支平衡
- 其他

香港經濟四個主要行業

社會專題研究

## 新增功能

- 按主題搜尋資料
- 地圖上的分區統計資料
- 查閱貿易貨物分類編號
- 以電子郵件及Really Simple Syndication (RSS)方式通知最新統計資訊
- 為學生、傳媒工作者、統計調查受訪者及進出口人士而設的專區

## 有關政府統計處網站

- 最新的經濟及社會統計資料及圖表
- 於新聞稿發布當天在網站查閱有關統計數據
- 香港官方統計資料的入門網站

請瀏覽政府統計處網頁  
[www.censtatd.gov.hk](http://www.censtatd.gov.hk)

# Quality Statistics to Serve the Community

**Census and Statistics Department**  
The Government of the Hong Kong Special Administrative Region

Government Information Centre | TEXT ONLY 繁體版 简体版 | SEARCH | SITE MAP

- Home
- What's New
- About Us
- Major Projects, Events and Developments
- Hong Kong Statistics
- Press Releases & Press Conferences
- Products and Services
- Media Workers' Corner
- Survey Respondents' Corner
- Corner on Trade Matters
- Statistical Literacy and Students' Corner
- Links
- Service Desk

**Highlights**

- Provisional Statistics of Retail Sales for November 2005**  
The value of total retail sales in November 2005, provisionally estimated at \$15.8 billion, increased by 4.2% over a year earlier.  
[More ..](#)
- Wage and Payroll Statistics for September 2005**  
The average wage rate, as measured by the wage index, rose by 0.8% in nominal terms in September 2005 over a year earlier. As for payroll, the index of payroll per person engaged increased by 3.2% in nominal terms in the third quarter of 2005 over a year earlier.  
[More ..](#)
- Report on "External Direct Investment Statistics of Hong Kong 2004" now available on sale**  
The report contains detailed statistics including inward direct investment by investor country/territory; outward direct investment by recipient country/territory; opinions of direct investors on investment environment of Hong Kong and more detailed information on external direct investment in Hong Kong.  
[More ..](#)

**Hong Kong Statistics**

- Population and Vital Events
- Labour
- External Trade
- Industrial Production
- Commerce
- Science and Technology
- Land, Building, Construction and Real Estate
- Housing and Property
- Transport, Communications and Tourism
- Public Accounts, Money and Finance
- Prices
- Education
- Health
- Social Welfare
- Law and Order
- Culture, Entertainment and Recreation
- Environment, Climate and Geography
- Energy
- National Income and Balance of Payments
- Others

**2006 Population By-census**

**Statistical Bookstore**

**Searching Commodity Codes**

**RSS** To get future highlights in RSS format  
[About RSS](#)

**Population, Household and Establishment Statistics**  
[About Viewing this Map](#)

**Key Indicators**  
Key Economic & Social Indicators  
[More..](#)

Four Key Industries in HK Economy  
Social Topics Studies

## New Features

- Information searching by theme
- District statistics on maps
- Trade commodity code searching
- Notification of latest statistics through e-mail and Really Simple Syndication (RSS) tool
- Dedicated corners for students, media workers, survey respondents and importers/exporters

## About C&SD Website

- Latest economic and social statistics and charts
- Press releases available on day of release
- Portal site for Hong Kong official statistics

Please visit  
**www.censtatd.gov.hk**